



Inside This Issue

Up to the Challenge	Pages 1 & 4
The MDA Draft Nitrogen Fertilizer Rule	Pages 1, 2 & 3
Executive Director's Report	Pages 2 & 4
Dale's View	Page 3
Reguletter	Insert



INPUTS

Up to the Challenge

"Up to the Challenge" dynamic keynote speaker and Vikings star Matt Birk will be a life changing, career boosting, business enhancing presentation. Invest in resources preparing for the challenges you and your team face by attending the bigger and better CPM Short Course and MCPR Trade Show in Minneapolis December 12-14, 2017. Be one of the 200 receiving a free autographed copy of his book. Matt will provide the insights and inspiration you need to face the challenges to come as he provides you with a winning insight into Leadership, Teamwork, and Success.

Matt Birk grew up in St. Paul, Minnesota, attended Harvard University and earned a degree in Economics. While playing for the Harvard Crimson, he received several football honors, including All-Ivy League and Division I-AA All-American. Matt was



(continued on page 4)

The MDA Draft Nitrogen Fertilizer Rule:

MCPR Member Concerns and MCPR Guidance to Maximize Influence on Changes by August 25.

Most MCPR members are aware that the Minnesota Department of Agriculture (MDA) is developing a Nitrogen Fertilizer Rule (Rule), and is seeking comment. MCPR members have been expressing concern about adverse consequences if the rule is adopted as proposed. The purpose of the Rule is to minimize potential sources of nitrate pollution in the state's groundwater and to protect our drinking water. MCPR members have expressed concern that MDA has overreached in this proposal, primarily focusing in Part 1. Consider Part 1 below:



PART 1: Prevention - Use of nitrogen fertilizer in vulnerable groundwater areas will be restricted in the fall and on frozen soils.

Vulnerable Groundwater Areas

The application of nitrogen fertilizer in the fall or on frozen soils will be restricted in areas with vulnerable groundwater. An area with vulnerable groundwater is an area where nitrate can move easily through soil and into groundwater. The criteria used to determine vulnerability includes the saturated hydraulic conductivity of a soil ($K_{sat} \geq 10$ micrometers/second, roughly 1.4 inches/hour), near-surface bedrock and karst geology. K_{sat} is a physical property of the soil and is widely used by soil scientists to describe the soil's capacity to transmit water. Because Part 1 of the Rule is based on soils and geology, the area covered by the Rule is not subject to change over time. A field in a vulnerable groundwater area will always be subject to Part 1 of the Rule. To access the map which shows your location compared to where the Rule may apply go to www.mda.state.mn.us and select the nitrogen fertilizer rule link.

Vulnerable groundwater areas will be determined section by section

In areas where more than 50% of the section has vulnerable groundwater, fall and frozen soil application will not be allowed in the entire section. If less than 50% of the section

(continued on page 2)

MDA Draft Nitrogen Fertilizer Rule

(continued from page 1)

has vulnerable groundwater, fall and frozen soil application is restricted on fields with karst or near surface bedrock or where the predominant soil type is vulnerable.

Exceptions to the restriction?

Fall application of nitrogen fertilizer will be allowed in vulnerable groundwater areas to 1) establish small grains, 2) fertilize pasture, 3) apply phosphorus fertilizers (MAP, DAP) and other micronutrients that contain nitrogen; the overall applied nitrogen rate must not exceed 20 pounds per acre, and 4) conduct agricultural research on areas 20 acres or less in size.

PART 2: Mitigation - Follow BMPs in areas with high nitrogen concentration in groundwater.

If the Rule is adopted as is, all areas identified with nitrate contaminated groundwater must begin in a voluntary level of mitigation which can move to mandatory compliance in BMPs. MDA will form a local advisory team will advise them regarding appropriate response activities for the area and to support implementation of these activities. Use of nitrogen fertilizer best management

practices (BMPs) and alternative practices are key components of Part 2 of the Rule.

Mitigation Level Designations

The Rule outlines a multi-level approach designed to involve local farmers and agronomists in helping to reduce nitrate losses in areas with high nitrate in groundwater. There are four mitigation levels. Mitigation is the action of reducing the severity of a problem. The initial designation of a mitigation level is based on nitrate concentrations that are near to or exceed the nitrate health risk limit of 10 milligrams per liter. Nitrate data from public and private wells will be used to prioritize areas of greatest concern and to determine if mitigation is necessary. Because Part 2 of the Rule is based on nitrate concentrations in drinking water, the area covered by the Rule is subject to change over time. An area may move in and out of the mitigation levels. All areas identified with elevated nitrate contamination will begin in a voluntary mitigation level 1 or 2.

To see a map of the townships which will be subject to Part 2 of the Rule which shows your location compared to where

(continued on page 3)



Minnesota Crop
Production Retailers

Executive Director's Report

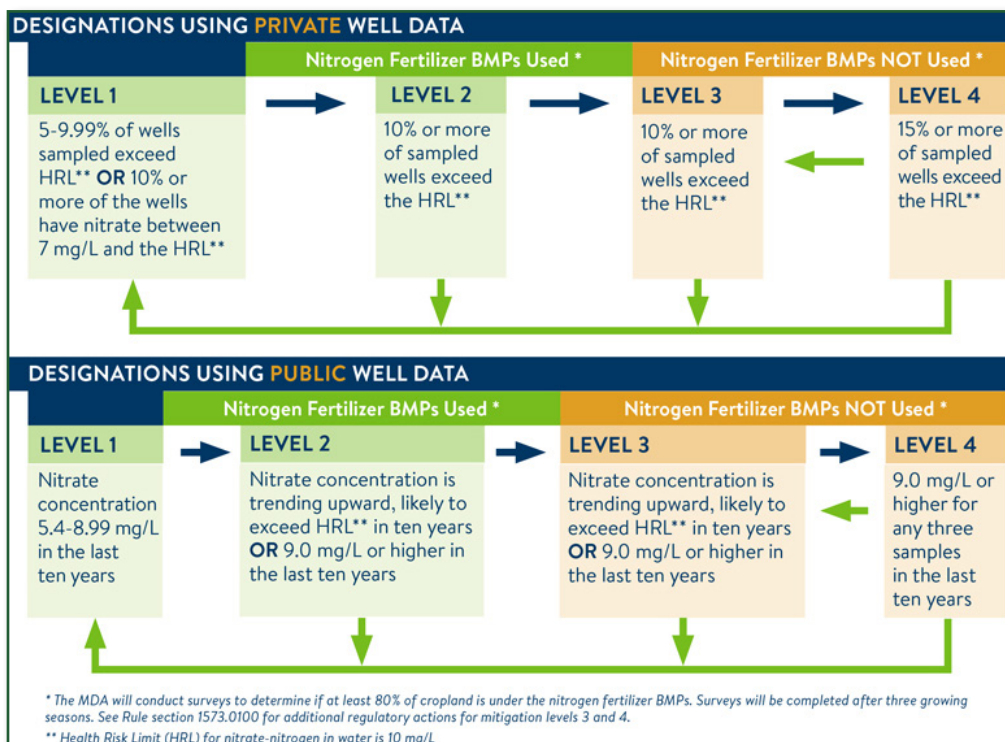
Hello MCPR Members,

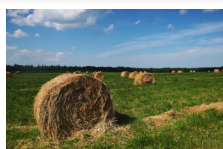
These have been challenging times for MCPR members. Planning for the educational sessions as the December 12-14 CPM Short Course and Trade Show, the planning committee selected the 2017 Theme, "Up to the Challenge" without any debate. The reason, MCPR member challenges are many. After the committee meeting, I reflected on the challenges which MCPR is aggressively addressing on your behalf and was surprised at the volume of issues such as:

- Develop a better understanding of MN Department of Agriculture (MDA) Nitrogen rule and how it will impact members and provide comments which will influence the outcome positively for Minnesota agriculture.
- Mergers & acquisitions and consolidations continue to change the face and operations of the Minnesota Crop Input industry.
- From the state level, anticipating more rules which can force more consolidation and increased size and sophistication at a time when the public wants smaller farms and smaller agriculture.
- Reports of volatilization and drift issues in Minnesota and other parts of the country.
- Pollinators, neonicotinoids, and buffers – what to do and what's next?
- Risk in a very tight economic environment.

For this reason, I am proud of the growth and acceptance the CPM Short Course and MCPR Trade Show have generated. MCPR continues to lead by staying on the cutting edge of modern crop input agriculture in Minnesota.

(continued on page 4)





MDA Draft Nitrogen Fertilizer Rule

(continued from page 2)

the Rule may apply go to www.mda.state.mn.us and select the nitrogen fertilizer rule link.

The area covered by the designation will be defined using township boundaries (for household/private wells) or drinking water supply management area boundaries (for community/public wells). A drinking water supply management area (DWSMA) is the area from which water will reach a public water supply well within approximately 10 years. DWSMA boundaries are defined by the Minnesota Department of Health.

A local advisory team, consisting primarily of producers and Ag professionals will advise the MDA regarding appropriate response activities for the area and to support implementation of these activities. Recommended nitrogen fertilizer Best Management Practices (BMPs) and alternative practices will be promoted within these vulnerable areas. After three growing seasons, the MDA will reevaluate the mitigation level. If nitrogen fertilizer BMPs are being used on 80% of cropland in the designated area (township or DWSMA), regulations will not be required. If nitrogen fertilizer BMPs are not being used, the area can move into a regulatory level. The Rule will include a list of site specific management practices that may be required in areas that progress to regulatory mitigation levels 3 and 4. The mitigation criteria are shown in the diagram (see page 2).

MCPR's Advice

We advise ALL MCPR Members to contact the MDA as indicated below. Watch the E News for specific concerns and methods to maximize your impact. But this is important. Even if you have commented already...please comment again to respectfully request that Part 1 of the proposed rule be deleted.

Public Comment

The current public comment period is June 7 - August 25, 2017. Please submit written comments to Larry Gunderson by August 25, 2017 through mail, email, or use the online comment form. MCPR will provide a link in E News but you can also submit via letter to:

Larry Gunderson

Pesticide and Fertilizer Management Division
Minnesota Department of Agriculture
625 Robert Street North
St. Paul, MN 55155 ✂



Dale's View

The proposed Minnesota Department of Agriculture rule restricting Nitrogen application is another major challenge MCPR members must effectively address together. As the comment deadline approaches, some members may find that the rule if approved as drafted will have little actual impact on their products and services. Others have concluded that the rule as proposed will have long term negative impact on their ability to supply products and services to growers. However, we must unite to support each other by commenting to the MDA before the deadline August 25, 2017. Read this issue and watch MCPR E news for more info and directions. Each agronomist should plan to make comments- in this case volume of comments is important as well as content. ✂

Dale Johnson

Dale Johnson
MCPR Board Chair



Minnesota Crop Production Retailers

15490 101st Ave. N., Ste. 100
Maple Grove, MN 55369

Phone: 763.235.6466

Fax: 763.235.6461

www.mcpr-cca.org

PRESORTED STANDARD
U.S. POSTAGE
PAID
HAMEL, MN
PERMIT NO. 75



MCPR Board

Dale Johnson Board Chair

Jeff Arnold
Doug Becher
Jeff Einck
Perry Estabo
Kyle Kraska
Craig Maurer
T.J. Phillips
Arnie Sinclair
Bryan Strickler
Rick Walker
Tristan Wilmes
Tim Woelfel

Staff

Bill Bond Executive Director
Jessica Brunelle Vice President

Up to the Challenge

(continued from page 1)

selected by the Minnesota Vikings in the sixth round of the 1998 draft. Appearing in 228 career games, including 18 playoff contests, Matt spent 11 seasons with Minnesota and 4 more with the Baltimore Ravens. He was named the 2011 Walter Payton NFL Man of the Year for his off-the-field service, as well as his playing excellence.

After a 15 year career in the NFL and a Super Bowl XLVII win with the Baltimore Ravens, the six-time Pro Bowl Center retired. Today, Matt Birk is inspiring, teaching and motivating audiences across America as a national speaker who has long lines waiting to shake his hand the moment comes off the stage. His personality connects with every attendee, his humor brings laughter to the ballroom, and his information is memorable and applicable. Don't miss this year's featured speaker. ✨

Executive Director's Report

(continued from page 2)

By the way, the MCPR web page has been upgraded and our member data base is being improved through an investment in new software services. Take a look at www.mcpr-cca.org. Full tribute for these improvements go to MCPR's Vice President Jessi Brunelle. Be sure to thank her next time you chat with her. ✨

Until next time,

Bill Bond

Bill Bond

