



Development along Transitways- Past, Present & Future



Lucy Galbraith, AICP—Director, Transit
Oriented Development, Metro Transit

Libby Starling—Manager, Regional Policy
and Research, Metropolitan Council





Overview of our presentation this morning

- TOD 101: What is Transit-Oriented Development? (Lucy)
- Where Development is Following Transit (Libby)
- The Future is not the Past: Setting the Stage for Future Transit-Oriented Development (Libby)
- Forecasting Growth Along Transitways (Libby)
- Green Line LRT Contracting Opportunities (Lucy)



What is Transit-Oriented Development?

An Overview



Transit Oriented Development Overview



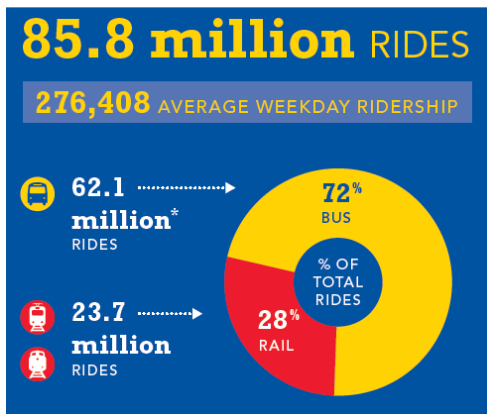
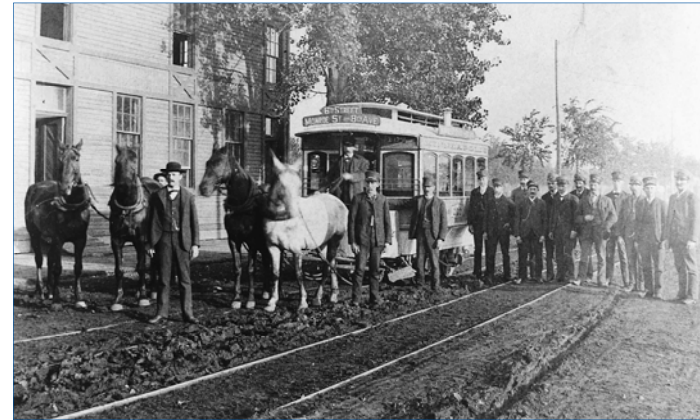
Lucy Galbraith, AICP
Director, Transit Oriented
Development



Transit in the Twin Cities



- 1872 horse-drawn streetcars
- 1920 238 million rides
- 1931 523 miles of streetcars
- 1954 buses replace streetcars
- 2004 Blue Line LRT opens
- 2014 Green Line LRT opens
- 2016 A Line BRT opens



Transit Oriented Development



- Walkable, urban development supported by transit
- Metro Transit TOD office
 - Develops Met Council-owned land
 - Connects partners to funding & other resources
 - Coordinates TOD within Metro Transit
 - Provides expertise & support to partner jurisdictions



TOD means Connections & Choices



Transit Needs Density



Transit Needs Diversity (Incomes, Uses, People)



Transit Needs Walkability



- Sidewalk
- Shade
- People
- Windows
- Activity
- Lighting



Summary: Why transit? Why TOD?

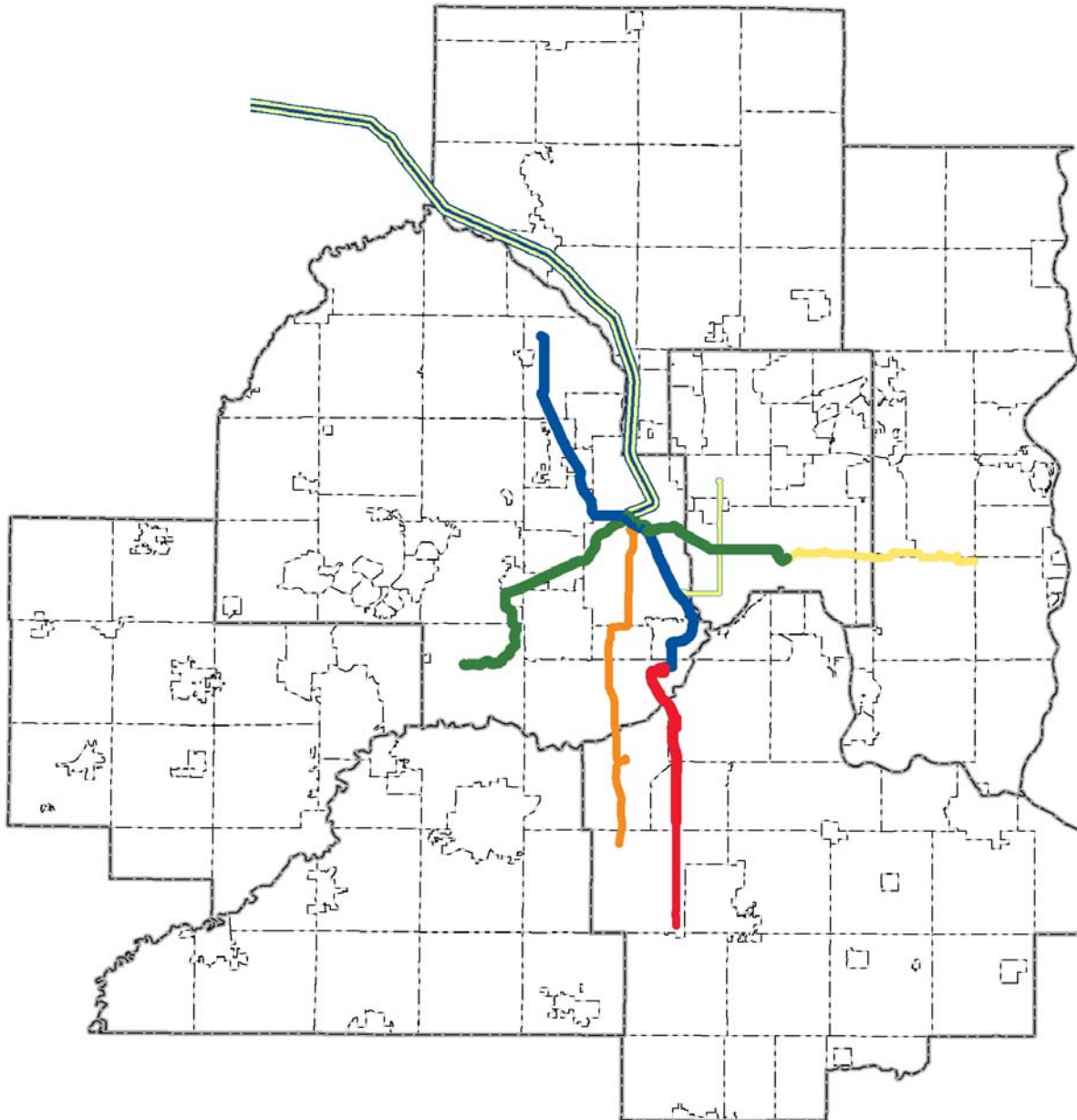


- Sustainability
 - Transit supports sustainability
 - Sustainable development needs transit
- Efficiency
 - Transit efficiency depends on urban development
 - Efficiency of development depends on transit
- Economics
 - Transit saves people money; they can spend this on something else
 - Transit supported development can generate more value at lower cost
- Public Health
 - Active transportation has measurable health benefits
 - Healthy communities need transit



Where Development is Following Transit

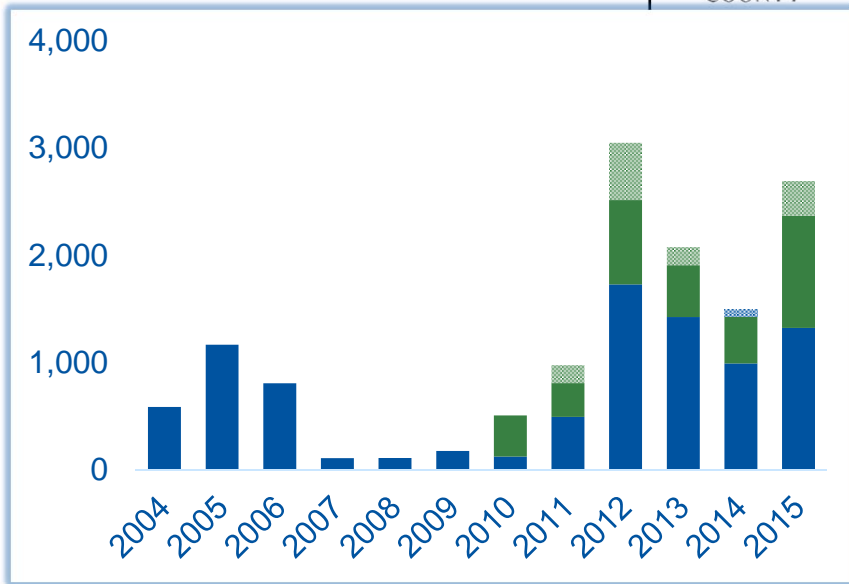
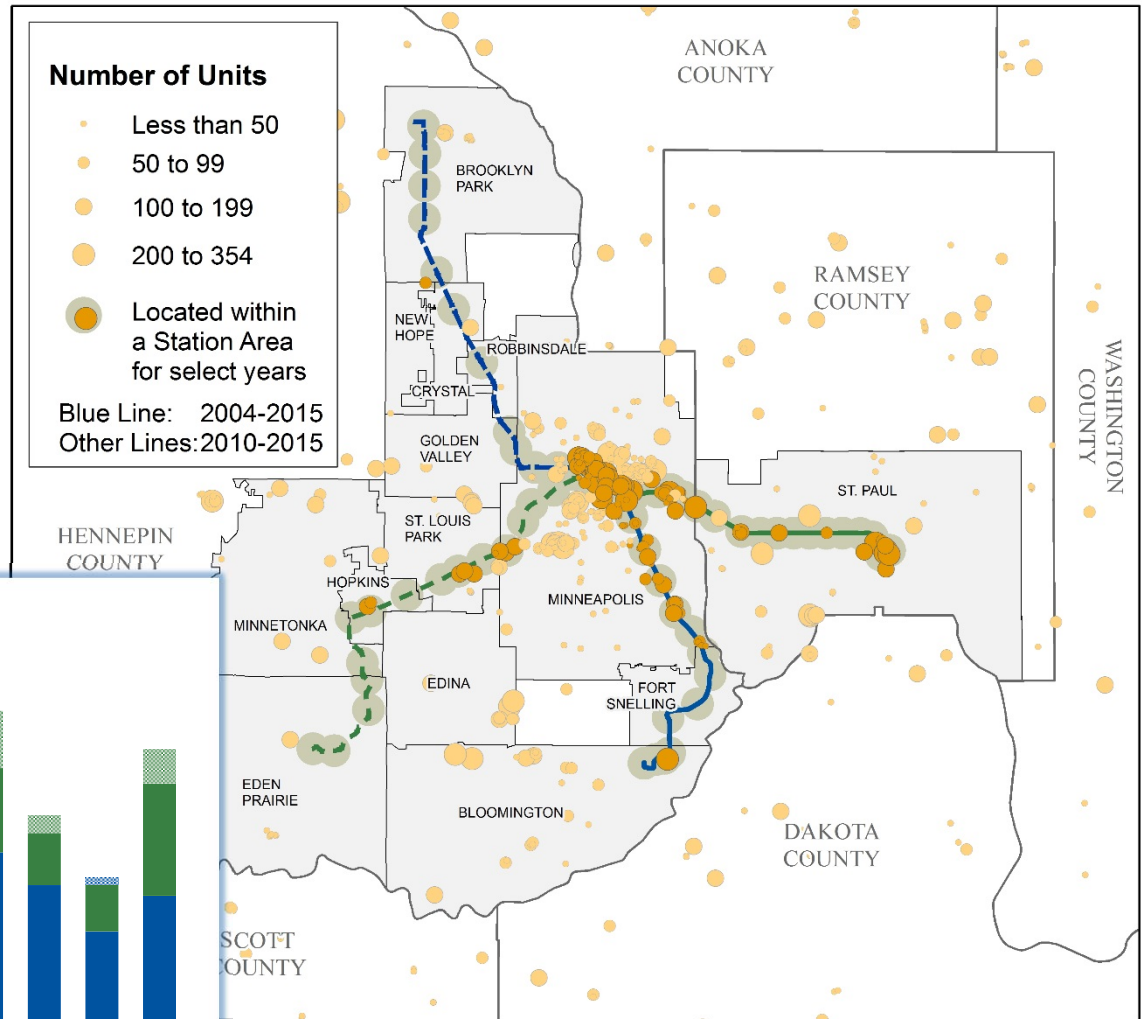
Growth of fixed-route transit system



Multifamily Residential along Transit

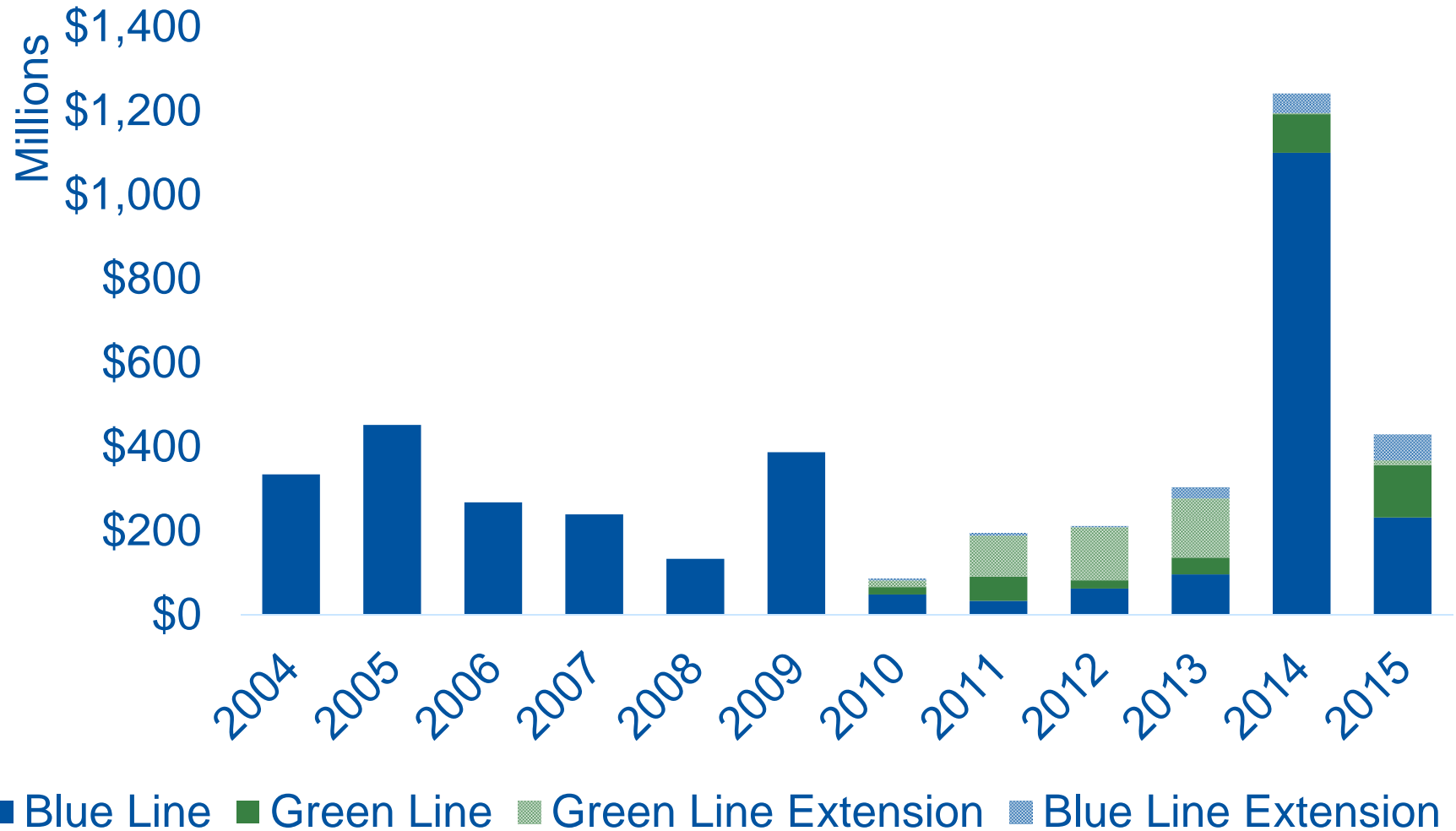


More than one in three multifamily developments from 2010 built along four existing and planned transitways



Source: Annual Building Permits Survey, Metropolitan Council

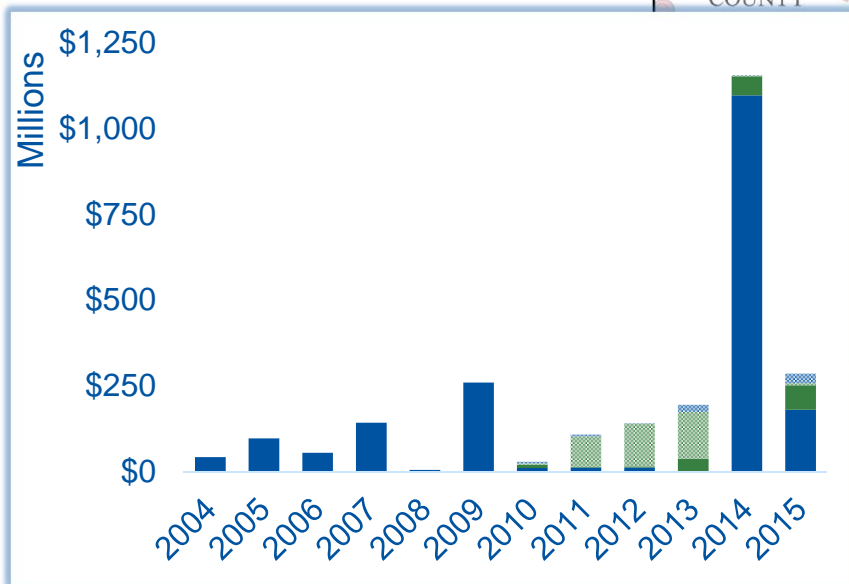
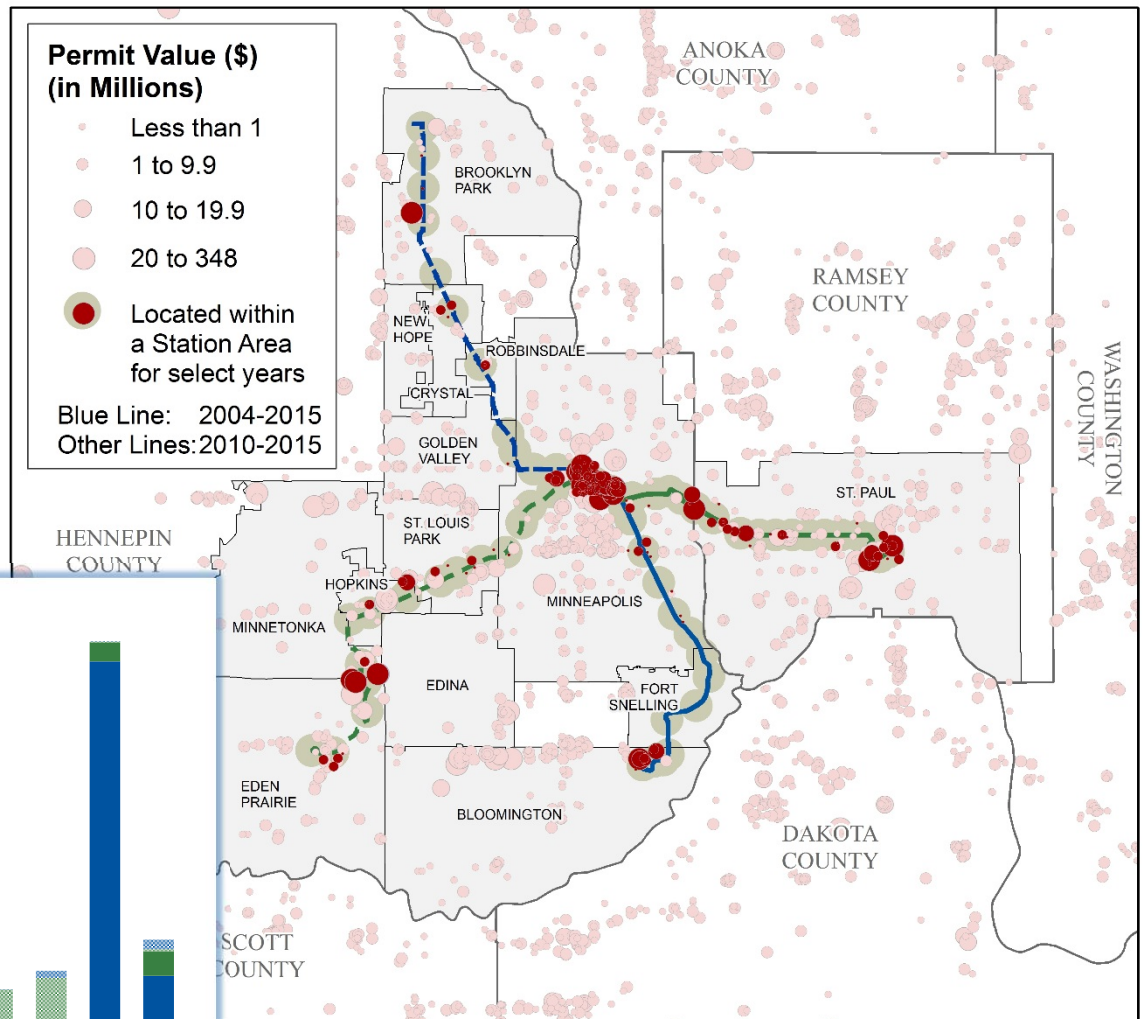
Non-Residential Construction along Transit



Commercial Construction along Transit



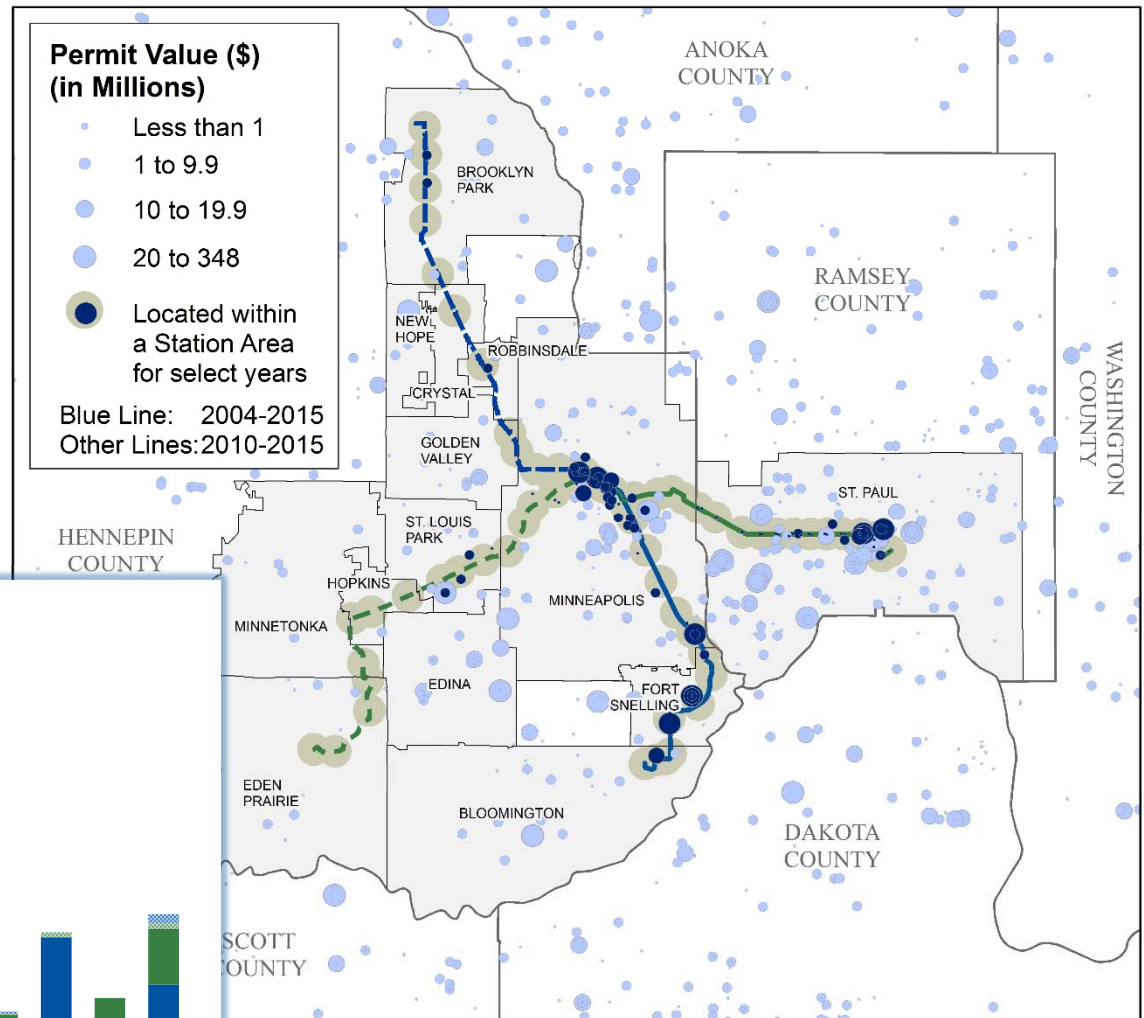
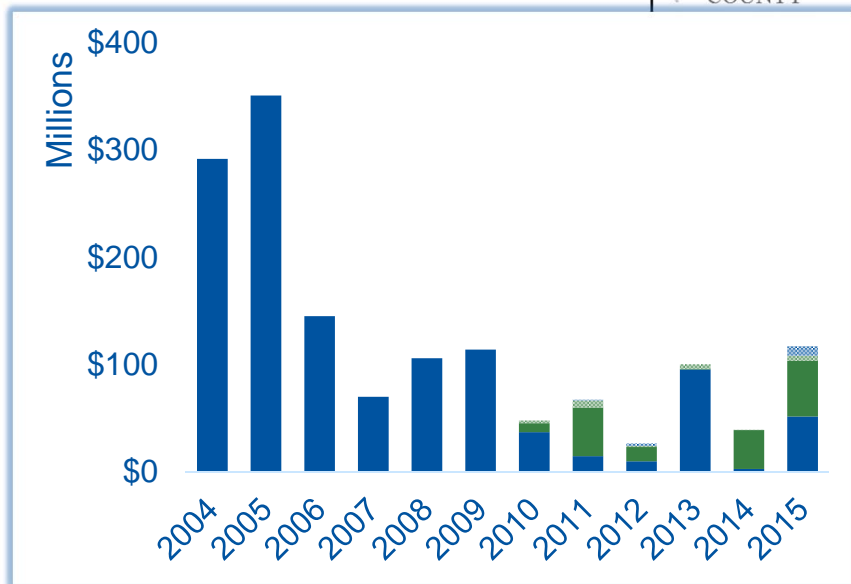
18%* of commercial development value from 2010 built along four existing and planned transitways



Source: Annual Building Permits Survey, Metropolitan Council

Public/Institutional Construction along Transit

15% of public / institutional development value from 2010 built along four existing and planned transitways




Source: Annual Building Permits Survey, Metropolitan Council



The Future is not the Past

Setting the demographic stage for future Transit-Oriented Development



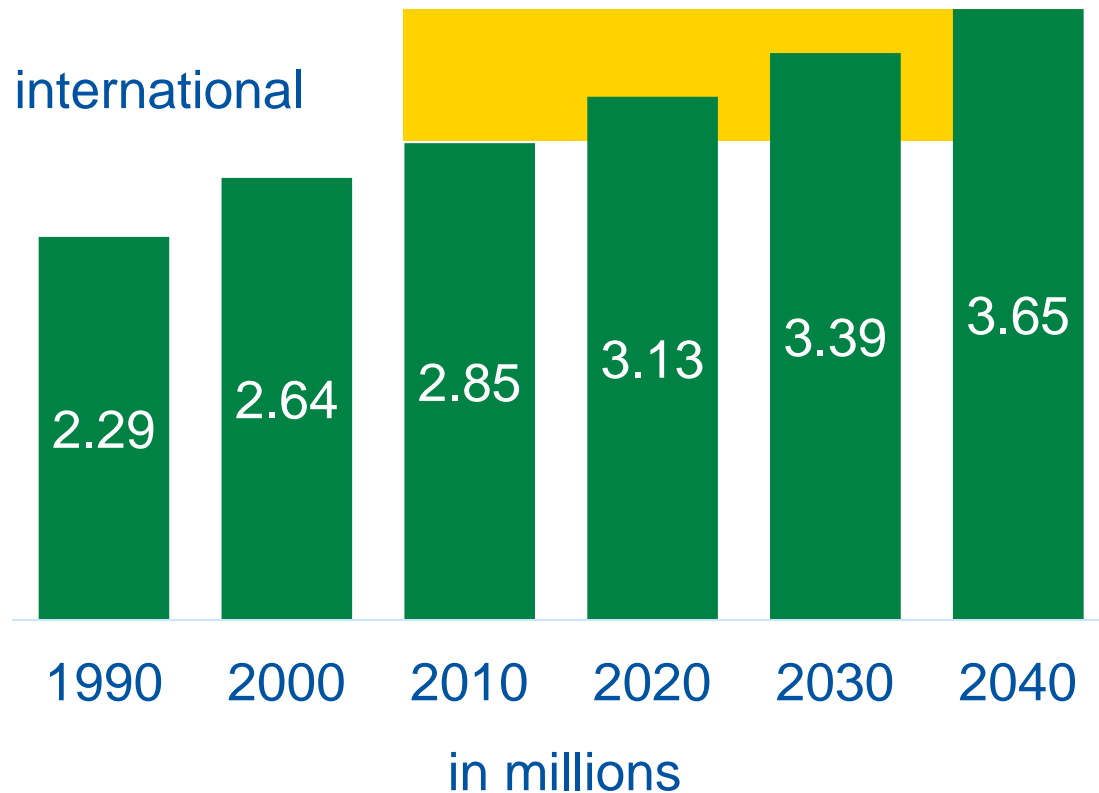
**What will
2040 look
like?**

Continued population growth to 2040



28
percent
growth
over the
next three
decades

75% growth from natural
increase
25% from international
migration



Source: 1990-2010 data on population from Census Bureau;
2020-2040 forecasts from the Metropolitan Council (July 2015 release)



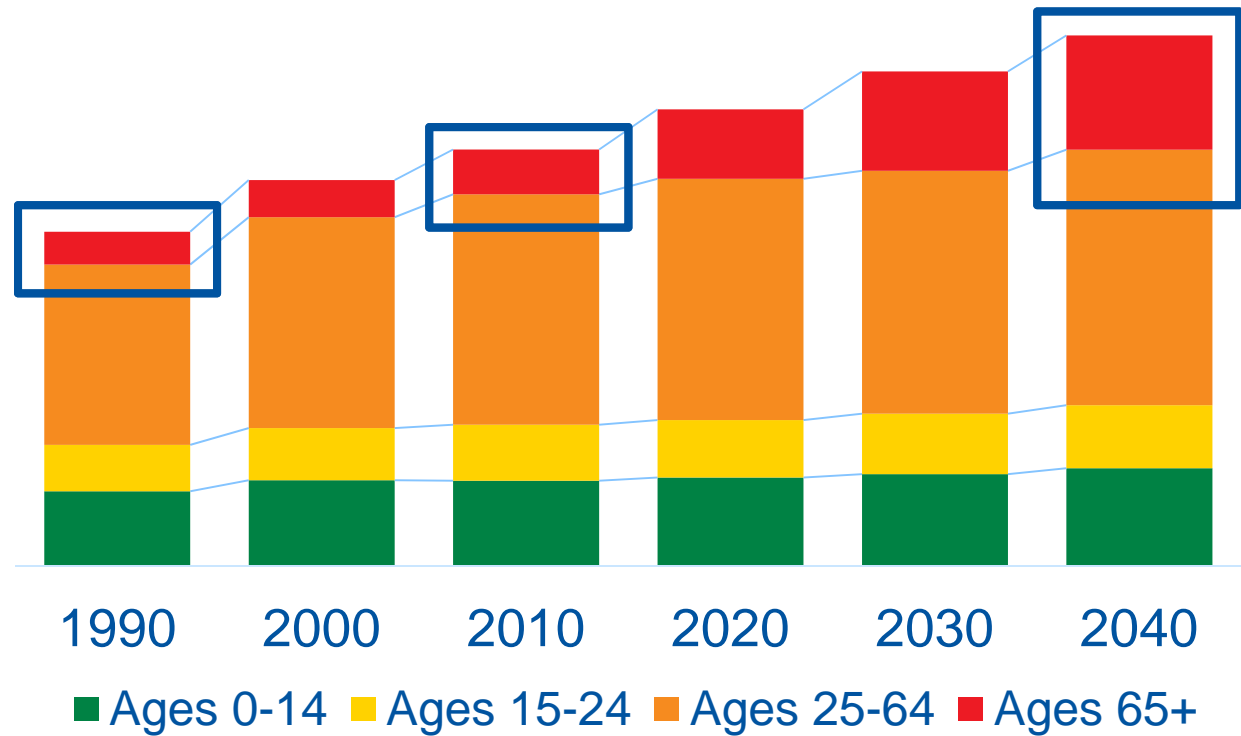
Every day we're getting older!



One in ten
in 1990

One in nine
in 2010

*One in five
people in
2040*



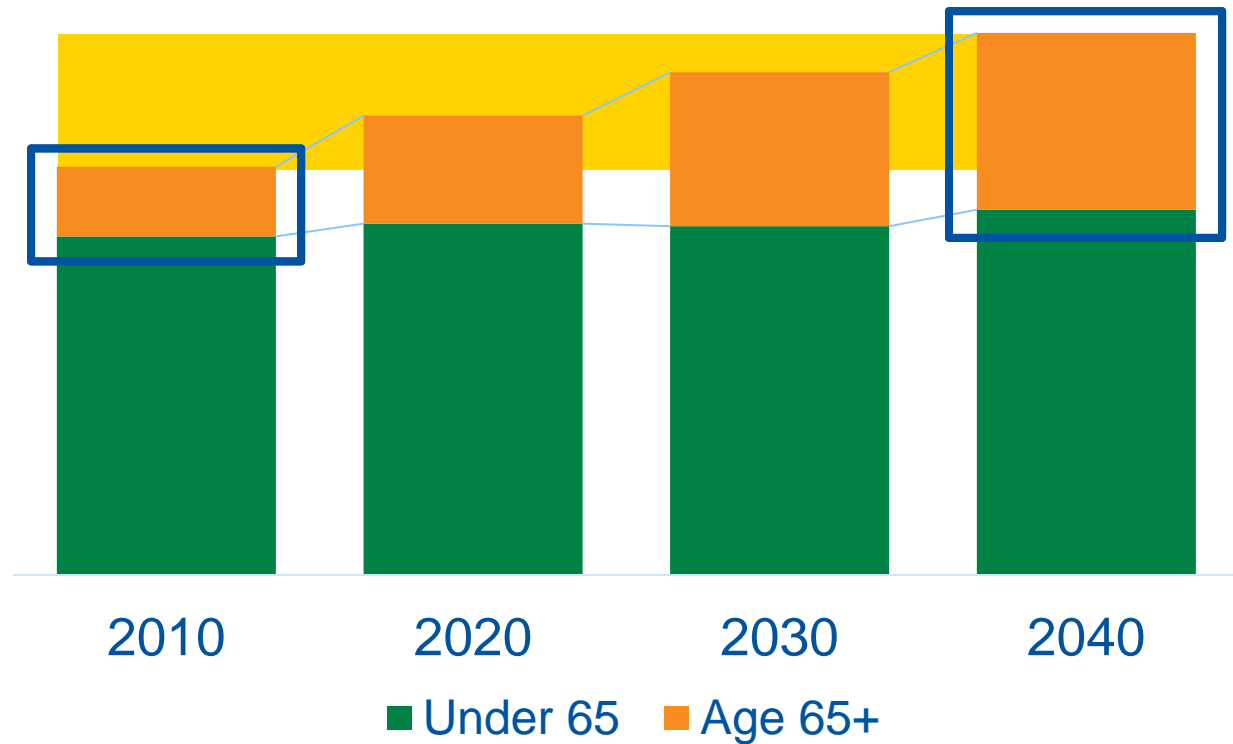
Source: 1990-2010 data on population from Census Bureau;
2020-2040 forecasts from the Metropolitan Council (July 2015 release)

Older people >> older households



One in **six** households in 2010

One in **three** households in 2040



Source: 2010 data on households from Census Bureau; 2020-2040 forecasts from the Metropolitan Council (July 2015 release)

The new demand is old!

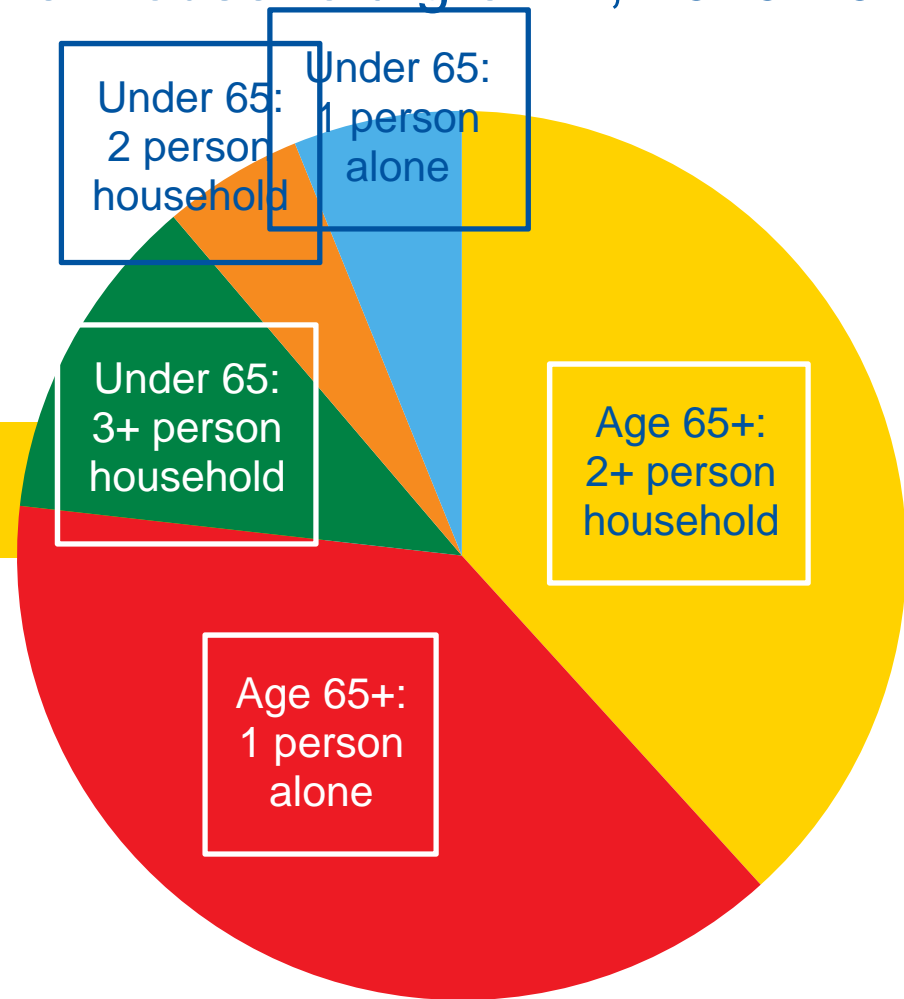


Net household growth, 2010-2040:

Three quarters of household growth age 65+

Less than one in five have children

One in three will be individuals living alone

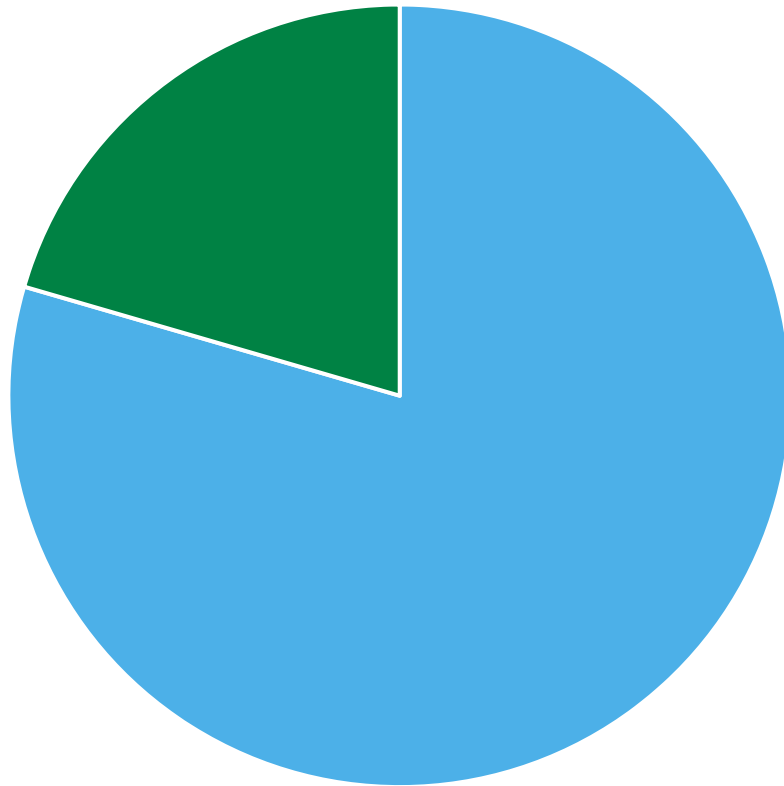


Source: 2010 data on households from Census Bureau;
2020-2040 forecasts from the Metropolitan Council (July 2015 release)

Reversal from past patterns

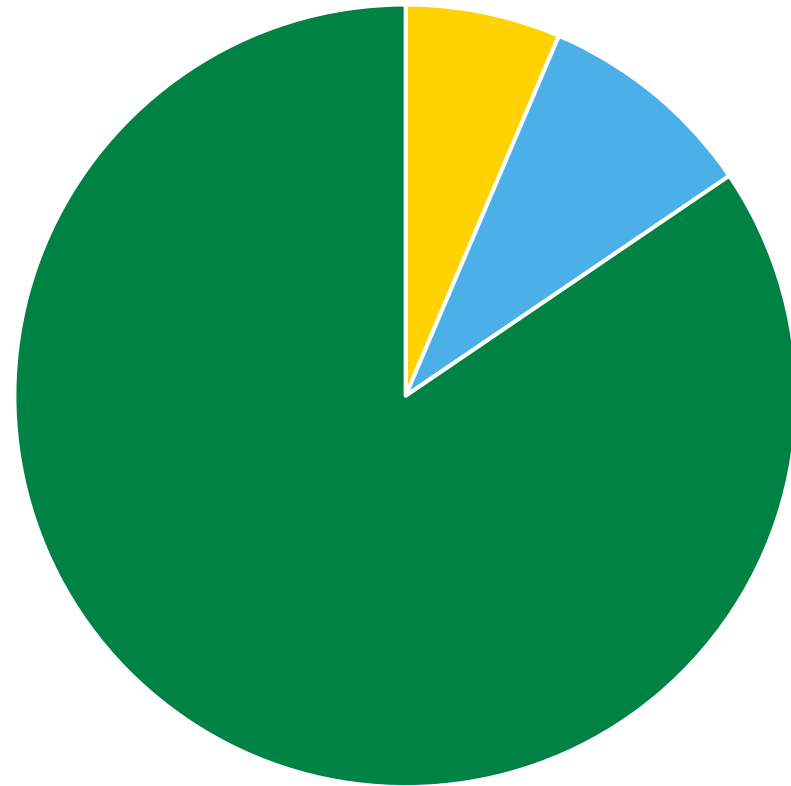


Net household growth 1990-2010



■ Under 35 ■ 35-64 ■ 65+

Net household growth 2010-2030



■ Under 35 ■ 35-64 ■ 65+

Source: Arthur C. Nelson, TWIN CITIES Metropolitan Council Area Trends, Preferences, and Opportunities: 2010 to 2020, 2030 and 2040, 2014.

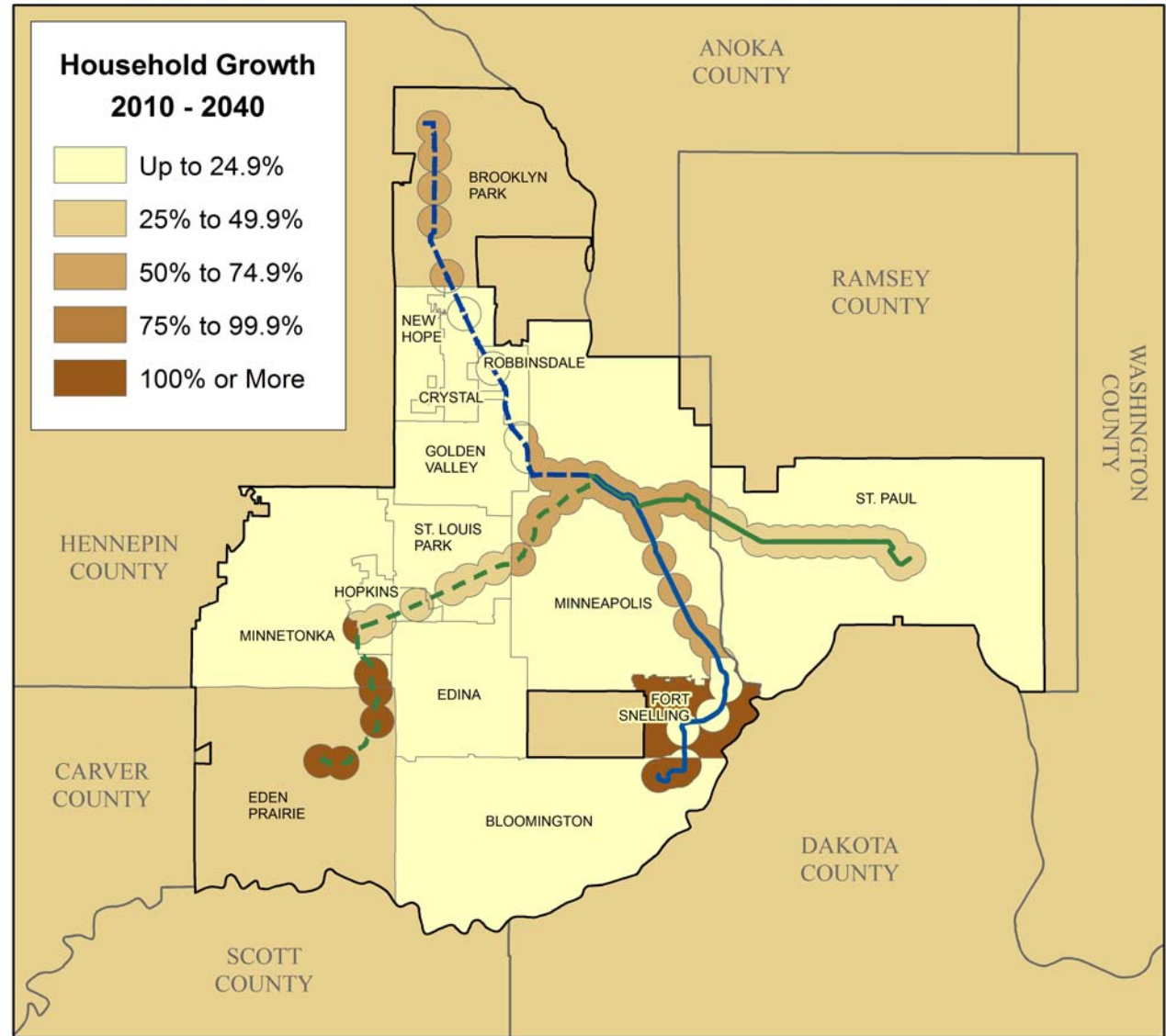


Forecasting future growth along transitways

What's ahead?



Cities are guiding growth along transit investments



Pending Projects



Well over \$2 billion in new and redeveloped projects and either planned or now under construction

- New hotels
- New housing
- Dorothy Day Center
- Colleges and universities (University of Minnesota, Augsburg College)





Green Line Extension contracting opportunities

Green Line Extension



- 15 Stations
 - Vertical circulation
 - West Lake St.
 - Bryn Mawr
 - Bassett Creek Valley



- Park-and-rides

- 7 Surface lots with a total of 1,747 spaces
- 1 Ramp at SouthWest Station with 2 elevators



- Structures
 - new bridges: LRT, pedestrian, roadway, freight
 - existing bridges with modifications
 - pedestrian tunnels
 - cut and cover tunnels
- OMF building with yard track & access roads
- Double track for LRT
- Demolition of existing buildings
- Roadways and trails
- Systemwide cable trough/ductbank/foundations
- Soil improvements
- Utilities and drainage
- Urban design and landscaping

- Systems site work
- Traction power substations (TPSS)
- Tunnel systems houses
- Overhead contact system
- LRT and freight signaling systems
- Tunnel facilities systems
 - Tunnel power
 - Ventilation
- Communications systems
 - Supervisory Control and Data Acquisition (SCADA)
 - Rail Control Center (RCC)
 - Radio
 - Public Announcement/ Variable Message Signs
 - Intrusion detection
 - Close Circuit TV (CCTV)
 - Emergency call boxes
 - Telephones
 - Building Management Systems
- SWLRT systems integration

Contract	Procurement Method	Timing	DBE Goal
Civil	Design/Bid/Build	Q1 2017	16%
Systems	Design/Bid/Build	Q2 2017	TBD
Operations & Maintenance Facility	Design/Bid/Build	Q2 2017	TBD

Milestones Look Ahead



Milestone	Rev. 10.0 Submitted 8/19/16
FTA Approves Entry into Engineering	Nov 2016
Complete 100% Design Package for Civil	Dec 2016
Submit FFGA Application	Early 2017
Complete 100% Design Package for Systems	March 2017
Complete 100% Design Package for OMF	May 2017
FTA Approves FFGA	July 2017
Heavy Construction	2017-2020
Revenue Service	2021



- Transit creates value by increasing access to jobs, shopping, & other needs
- Building transit is investing in the region, creating jobs through construction and operation of transit
- Transit investments have generated value, accommodated regional growth, and addressed demand for urban living
- Building TOD leverages the transit investment and adds to the regional portfolio of walkable urban places
- Metro Transit and Met Council are building transit and supporting transit oriented development



Questions?



metrotransit.org/tod
tod@metrotransit.org

metro council.org/data
research@metc.state.mn.us