

Transit in the Twin Cities Area

ACEC Forecasting Seminar

Mark W. Fuhrmann
Deputy General Manager
May 19, 2017

Today's Topics

- Overview of Metro Transit system
- FTA Capital Investment Grant Program
- METRO Green Line Extension (Southwest LRT)
- METRO Blue Line Extension (Bottineau LRT)
- Economic Development



Metro Transit: Building a Regional Transit System for the 21st Century



METRO System

- All-day, frequent service
- Light Rail Transit
 - Blue Line (2004)
 - Green Line (2014)
 - Green Line Extension (2021)
 - Blue Line Extension (2021)
- Highway Bus Rapid Transit
 - Red Line (2013)
 - Orange Line (2019)
 - Gold Line (TBD)

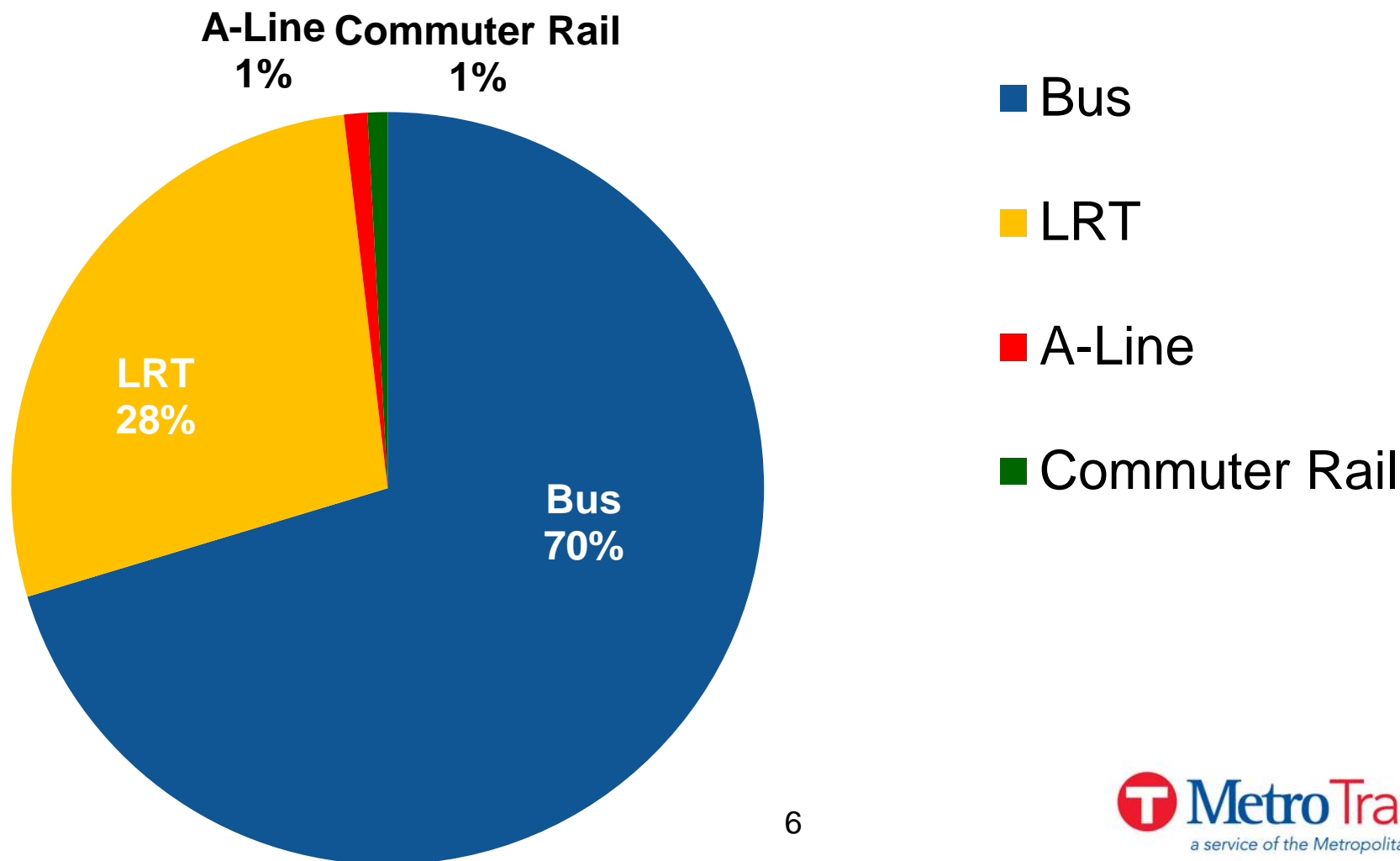


2016 Metro Transit Ridership

- 82.6M total rides
- 266K average weekday rides
- 12.7M Green Line rides, 2.5% increase from 2015
- 10.2M Blue Line rides
- 370K rides on Sept 1, 2016: new single day record



2016 Ridership by Mode



METRO Blue Line

- Opened June 2004
- 12 miles, 19 stations
- Serves Target Field, downtown Minneapolis, MSP Airport, Mall of America
- 30,337 avg. weekday rides (2016)
- 2,500 Park & Ride spaces



Northstar Commuter Rail

- Opened November 2009
- 7 suburban stations
- 3,000 Park & Ride spaces
- 40 miles of right of way
 - Owned and operated by BNSF
- 2,534 average weekday rides (2016)
- 6 commuter locomotives
- 18 passenger rail cars



METRO Green Line

- Opened June 14, 2014
- 11 miles, 18 stations + 5 shared with Blue Line
- Serves downtown Minneapolis, U of M, Capitol, downtown St. Paul
- 39,386 avg. weekday rides (2016)



Federal Transit Administration Capital Investment Grants

Fixed Guideway Capital Investment Grants

- Discretionary Capital Investment Grant (CIG) program provides funding for fixed guideway investments.

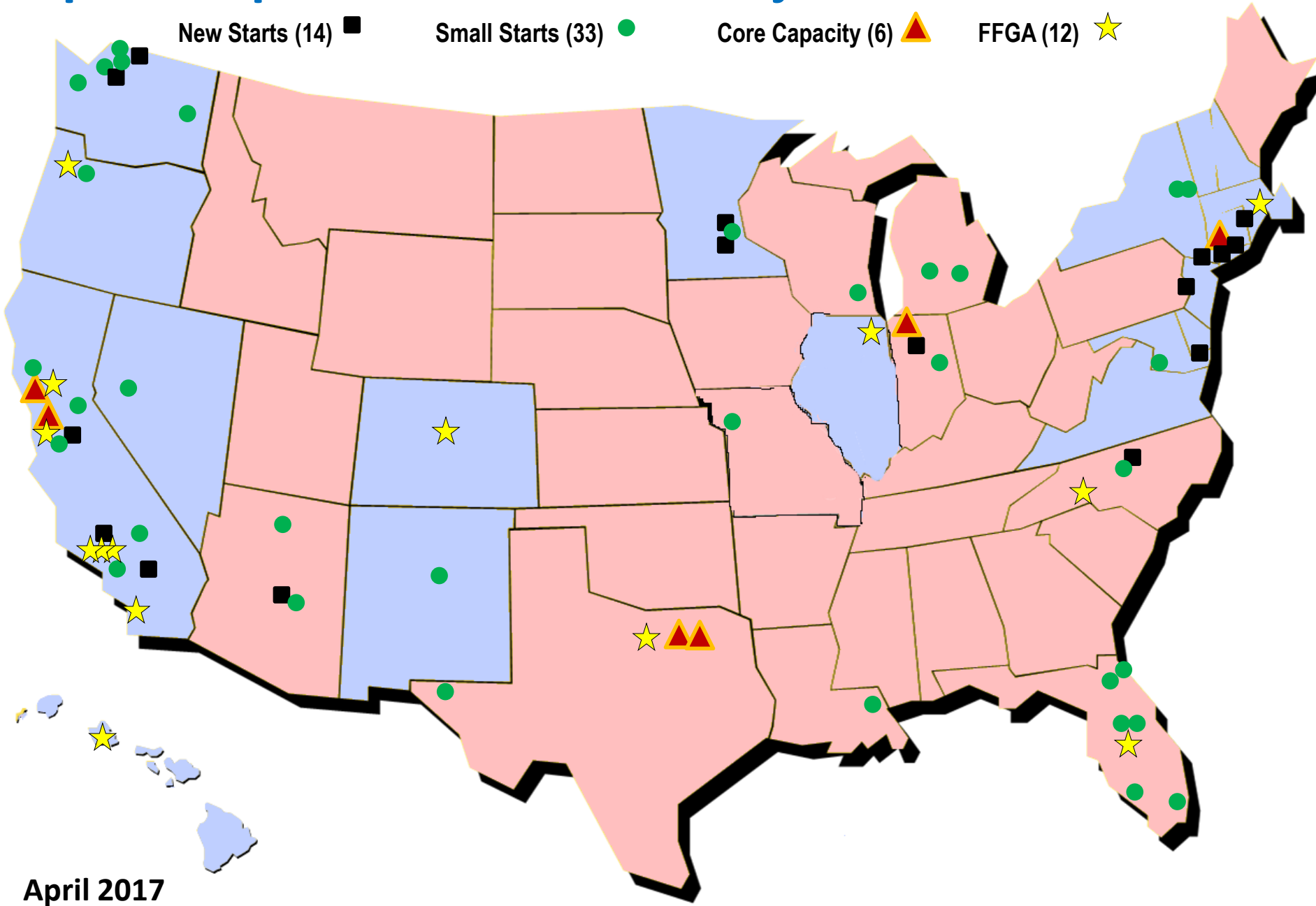
FAST Act Section 5309 Authorizations

FY15/MAP-21	FY16 (millions)	FY17 (millions)	FY18 (millions)	FY19 (millions)	FY20 (millions)
\$2,120.0	\$2,301.8	\$2,301.8	\$2,301.8	\$2,301.8	\$2,301.8

Current Capital Investment Grant (CIG) Projects

- New Starts (capital cost >\$300M or seeking >\$100M Section 5309 CIG program funds)
 - 15 projects including; Minnesota (2), New York (3), California (3),
- Small Starts (capital cost <\$300M and seeking <\$100M Section 5309 CIG program funds)
 - 33 projects including; Minnesota (1), California (4), Washington (5), Florida (6),
- Core Capacity (substantial capital investment in existing system that increase capacity by not less than 10% in corridors that are at capacity or will be in five years)
 - 6 projects including; New York, San Francisco and Dallas

Capital Improvement Grant Projects – 68 Total

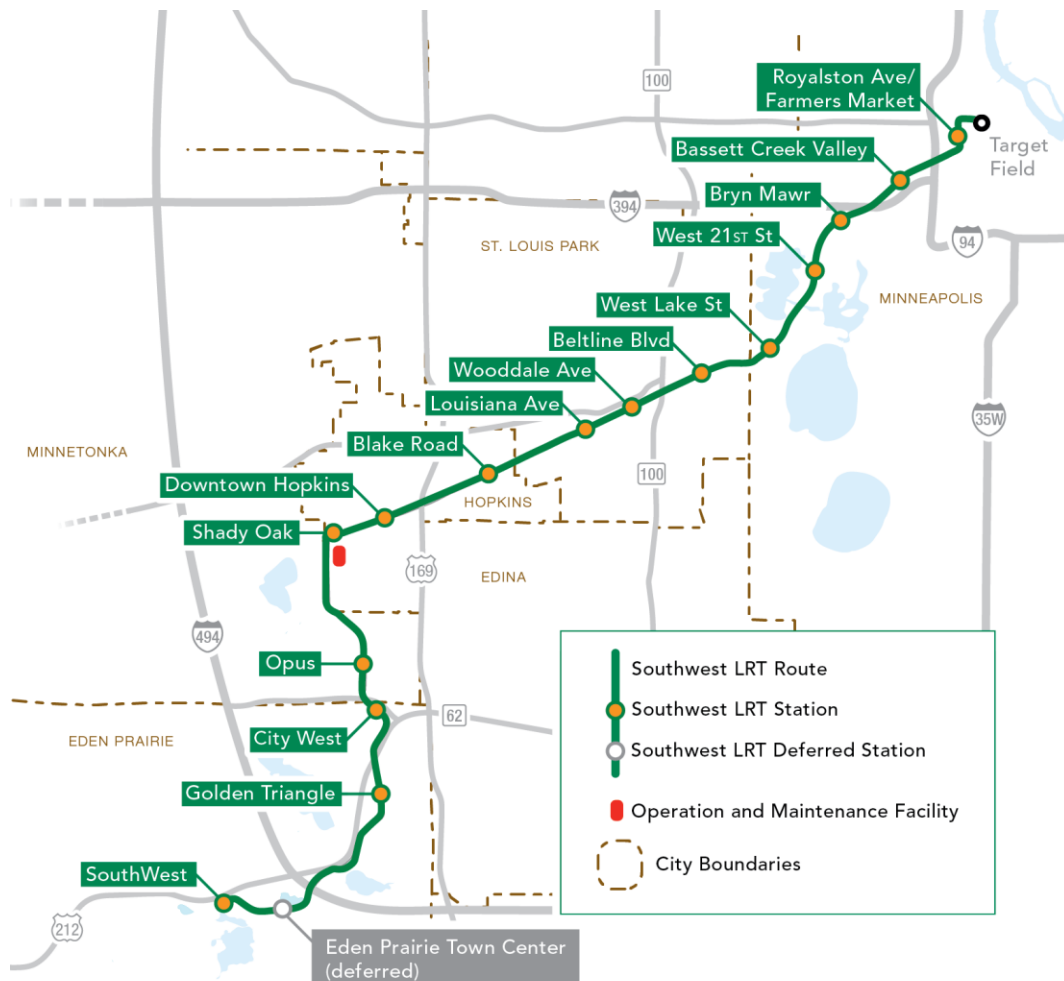


April 2017

METRO Green Line Extension (Southwest LRT)

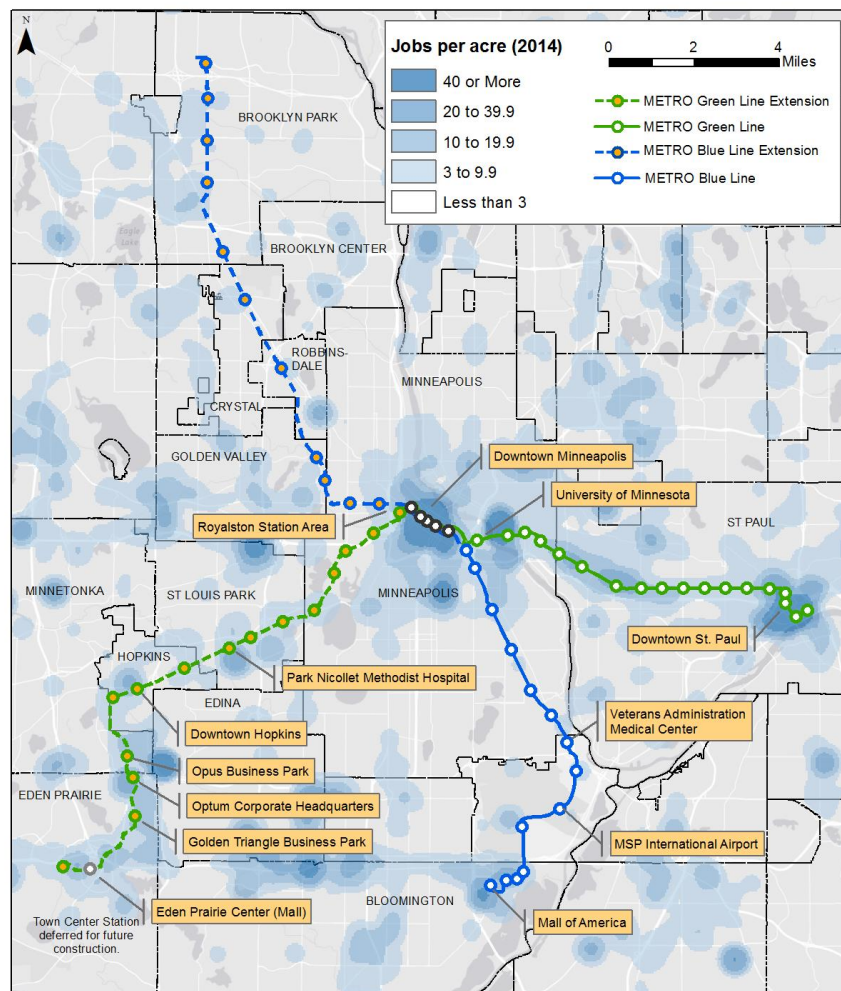
Green Line Extension – Southwest LRT

- Opening 2021
- 14.5 miles
- 15 stations
- 34,000 weekday boardings (2040)



Connects the Region's Employment Centers

Twin Cities Regional Job Density with Existing and Proposed Light Rail Transit



(2014 employment data)

5/2016

SWLRT Project Timeline

2013-15

Project Development/Environmental/Municipal Consent

2016

Final Environmental Impact Statement

2017

Engineering/Full Funding Grant Agreement

2017-20

Heavy Construction

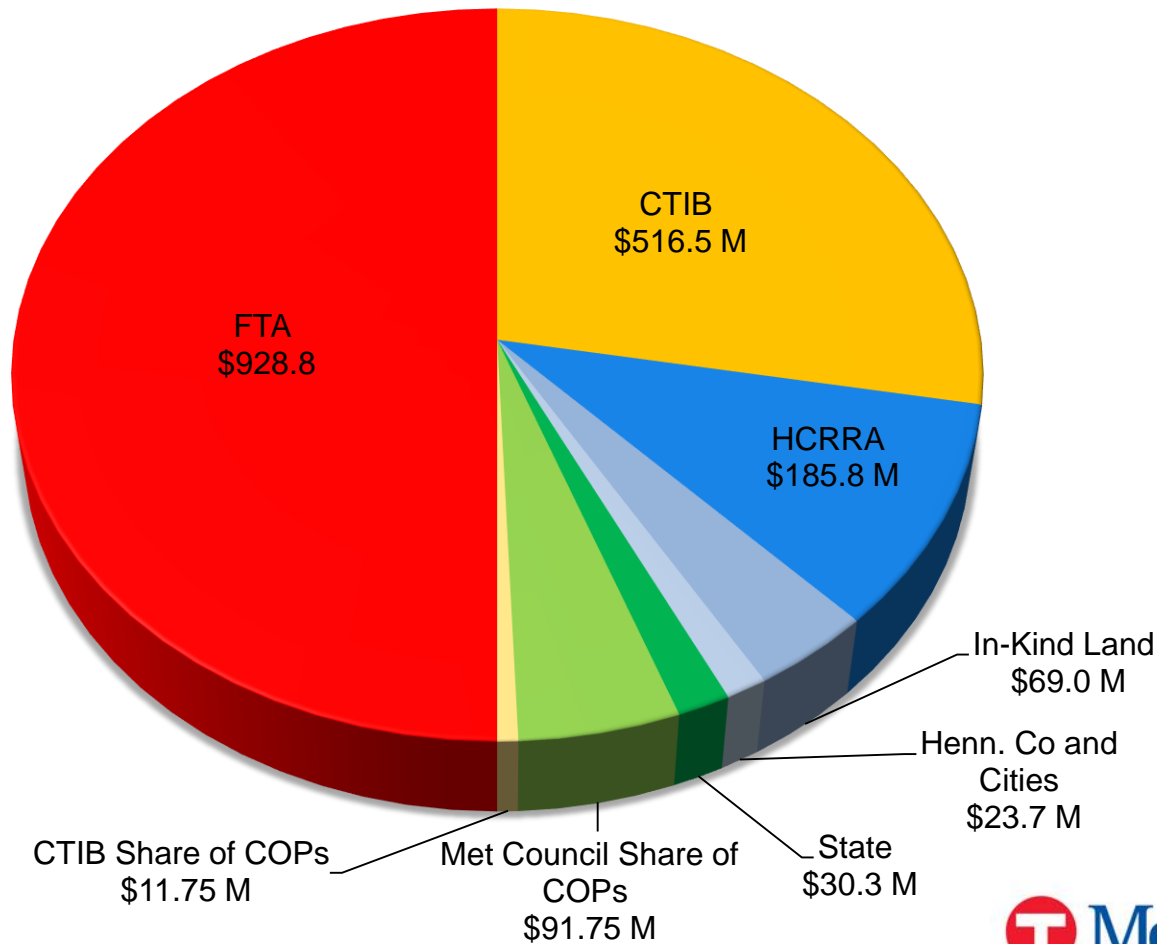
2021

Passenger Operations

SWLRT Sources of Funding

\$1.858 Billion

**\$928.8
Million
Local Funds
Committed**



SWLRT Contracts

Active Contract		Status	Timing
Light Rail Vehicles		Awarded	12/21/16
Civil		Bids Due June 6	Award: Q3 2017
Construction Management Services		Proposals Received April 26	Award Q3 2017
Future Contracts		Procurement Method	Timing
Systems		Issue IFB Q3 2017	Award: Q4 2017
Operations & Maintenance Facility		Issue IFB Q3 2017	Award: Q4 2017

Civil Contract Scope

- 15 Stations



Civil Contract Scope

- Park-and-rides
 - 7 Surface lots with a total of 1,747 spaces
 - 1 Ramp at SouthWest Station with 2 elevators



Civil Contract Scope

- 44 structures
 - 29 new bridges (LRT, Pedestrian, Roadway, Freight)
 - 7 existing bridges with modifications
 - 6 pedestrian tunnels
 - 2 cut and cover tunnels (TH62 582 ft., Kenilworth 2,236 ft)
- 15 at-grade crossings
- 117 retaining walls
- Track (153,440 TF)



Civil Contract Scope

- Demolition of 14 existing buildings
- Soil improvements
- Roadways and trails
- Systemwide cable trough/ductbank/foundations
- Utilities and drainage
- Urban design and landscaping
- Freight (BNSF, TCWR and CP)

Systems Contract Scope

- Systems site work
- Traction power substations (TPSS)
 - 19 TPSS on main line
 - 2 at the OMF
- 3 Tunnel systems houses
 - 2 for Kenilworth tunnel
 - 1 for TH 62 tunnel
- Overhead contact system
- LRT and freight signaling systems
- Tunnel facilities systems
 - Tunnel power
 - Ventilation



Systems Contract Scope

- Communications systems
 - Supervisory Control and Data Acquisition (SCADA)
 - Rail Control Center (RCC)
 - Radio
 - Public Announcement/ Variable Message Signs
 - Intrusion detection
 - Close Circuit TV (CCTV)
 - Emergency call boxes, telephones
 - Building Management Systems
- SWLRT systems integration



Real Time Departure Information
Updated real time departure information for next two trains

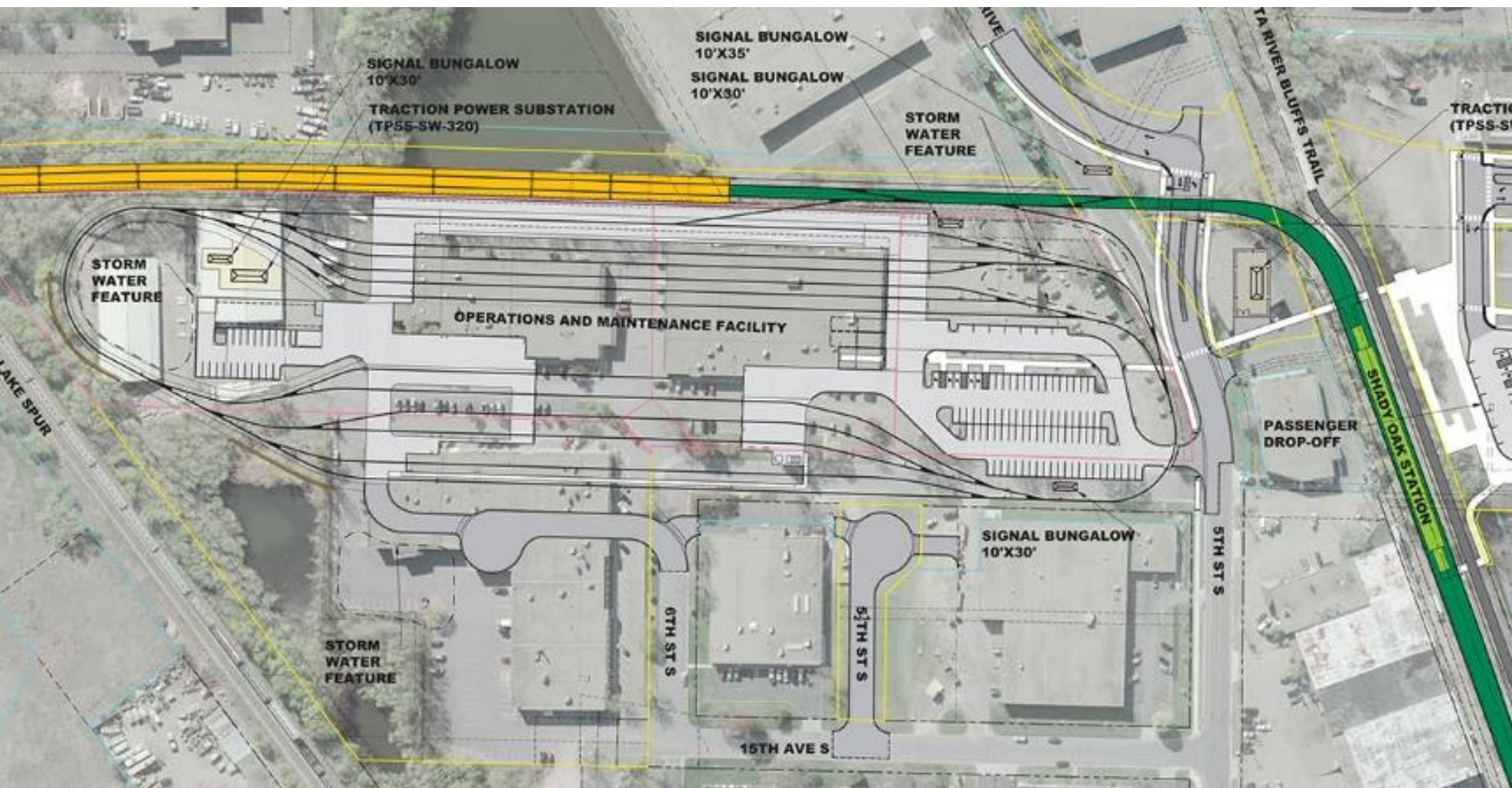
Security Cameras
Monitored 24/7 for enhanced station safety

Destination Information

Emergency Phone
Direct contact to Rail Control Center

Platform Tactile Edge
ADA Compliant, Creates a necessary buffer for riders between edge or platform and rail

Operations and Maintenance Facility



Operations and Maintenance Facility Contract Scope

- Demolition of 6 existing buildings
- Soil improvements
- Yard track
- OMF building (2 story, 162,356 s.f.)
- Access roads
- Systemwide electrical cable trough/ductbank/ foundations
- Utilities and drainage
- Urban design and landscaping



METRO Blue Line Extension (Bottineau LRT)

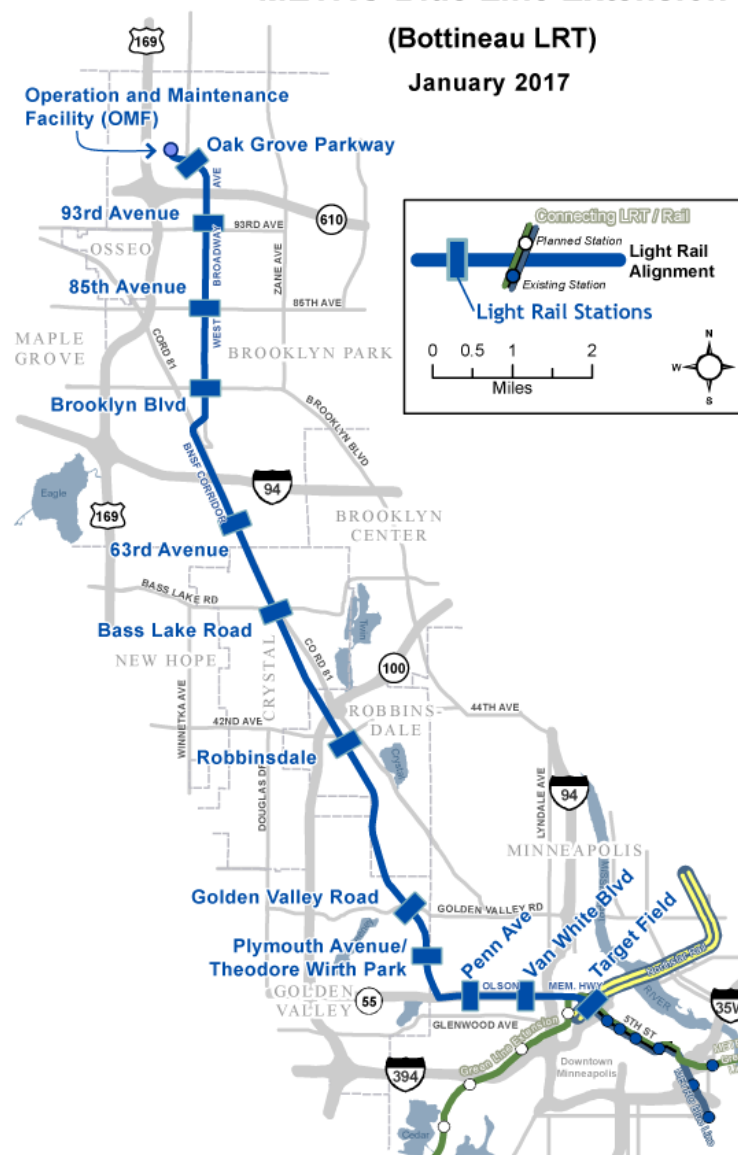
Project Description

- 11 new stations
- 13.5 miles of double track
- 27,000 est. rides by 2040
- Serving Brooklyn Park, Crystal, Robbinsdale, Golden Valley & Minneapolis
- One seat ride from Brooklyn Park to Bloomington

METRO Blue Line Extension

(Bottineau LRT)

January 2017

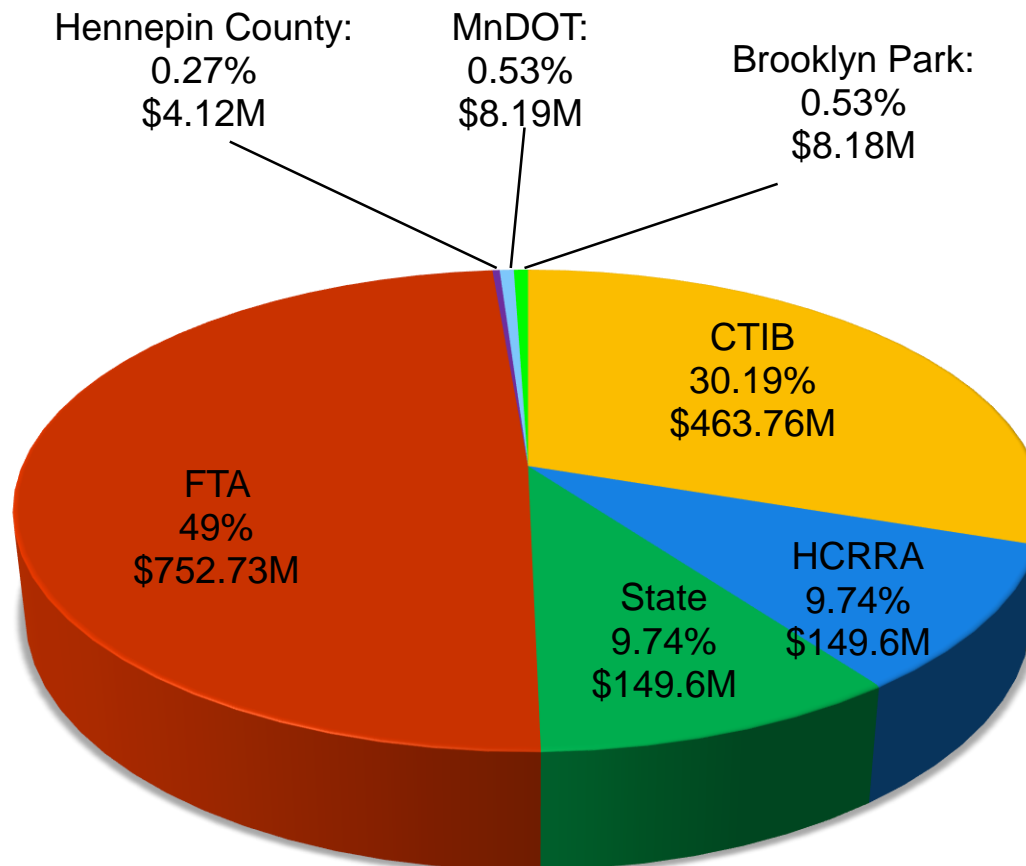


BLRT Project Timeline

2014-2016	Project Development
2016	Environmental/Municipal Consent
2017	Engineering
2018	Full Funding Grant Agreement
2018-20	Heavy Construction
2021	Passenger Operations

BLRT Sources of Funding

- Counties Transit Improvement Board
- Hennepin County RRA
- State
- Federal Transit Administration
- Hennepin County
- MnDOT
- Brooklyn Park



Cost Estimate: \$1.536 Billion

Proposed Construction Packages

- Civil 1 & 2:
 - Roadway
 - Utilities
 - LRT Guideway
 - Stations
 - Park and Rides
- Systems
 - Traction power
 - Overhead catenary system
 - Communications
 - Rail signaling



Proposed Construction Packages

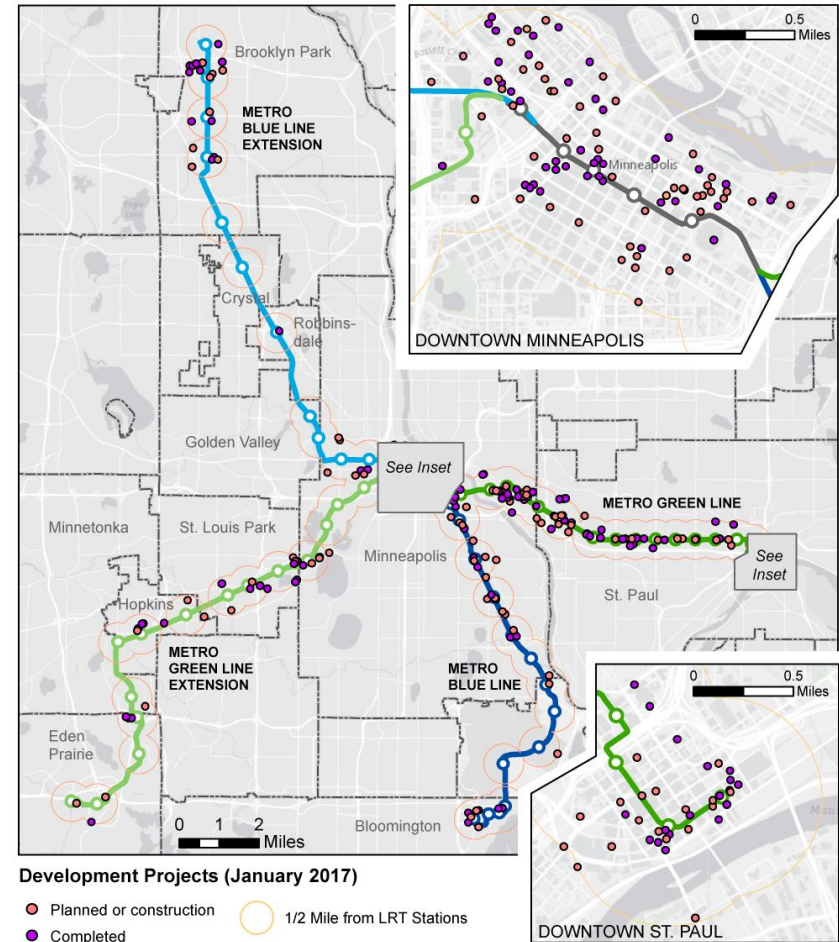
- Operations & Maintenance Facility
 - OMF building
 - Yard track
 - Vehicle storage
 - Light maintenance
 - Paint and body bay
- Franklin O&M Building
 - Overhaul bay expansion
 - Rail control center expansion



Economic Development

Nearly \$6.8B in development along LRT lines

- \$2.52 billion in downtown Minneapolis along both Blue and Green Lines
- \$700 million along Blue Line outside of downtown (15 of 33 projects)
- \$2.56 billion along Green Line outside of downtown
- \$515 million development planned or underway along Southwest LRT
- \$489 million development planned or underway along Blue Line Extension



Green Line: \$5.1B in development



Hamline Station Apartments



2700 University near Westgate Station



The 700 on Washington near East Bank Station

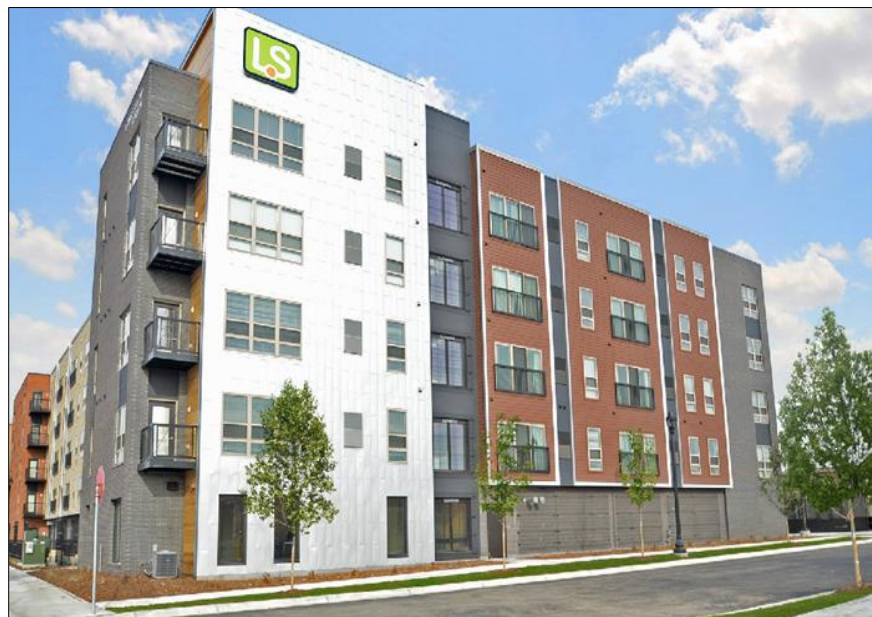
Blue Line: \$700M in development



The Oaks Station Place at 46th St Station



Station 38 Apartments near 38th St Station



Longfellow Station near 38th St Station

Green Line Extension: \$515M in development



Gallery Flats near Downtown Hopkins Station



The Moline near Downtown Hopkins Station



UnitedHealth Group/Optum Campus at City West Station

Blue Line Extension: \$489M in development



Nilfisk near 93rd Avenue Station



Thor Construction Headquarters Penn Avenue & Plymouth Avenue



Target North Campus near Oak Grove Parkway Station

More Information

www.metrotransit.org

www.SWLRT.org

www.BlueLineExt.org

@MetroTransitMN

@SouthwestLRT

@BlueLineExt