



Prospector

March/April 2017

Meet New Chamber Board Member and Executive Committee



Gaetan Giannini, Dean, Business & Entrepreneurial Initiatives, Montgomery County Community College (MCCC), has joined the Board to fill the remaining term of Phil Needles who now serves the College as Vice President for Student Affairs. Gaetan is responsible for the academic division, workforce

development, the Culinary Arts Institute, the Virtual Campus and the University Center.

Prior to coming to MCCC, Gaetan most recently served in a dual role as Dean of the School of Adult and Graduate Education and Chief Marketing Officer for Cedar Crest College.

Gaetan earned his MBA with a marketing concentration from Seton Hall University, and his Bachelor of Science degree in mechanical engineering technology from Temple University. He is currently working on his doctoral degree in education and higher education administration from Gwynedd Mercy University.

The Executive Committee serves as the leadership team for the Board of Directors. Pictured below are Chair, Dan Reavy, McMahon Associates; David Magagna, Alcom, Treasurer; Nanette Carney, The Carney Group, Secretary; Mike Coakley, Kreischer Miller, Vice Chair and Gary Brown, Univest Bank and Trust Co., Immediate Past Chair.



Power Your Potential Women's Conference Sold Out



The second annual half-day Conference exceeded expectations for the 220 attendees on March 23rd at Normandy Farm Hotel & Conference Center.

Val Arkoosh, Chair Montgomery County Board of Commissioners, the first female executive in the County's 233-year history welcomed the audience as the Honorary Chair. She was followed by Denise Devine as the keynote presenter. Denise shared her story as a young accountant rising to a corporate position at Campbell Soup Company, then venturing into entrepreneurial start-ups and becoming an Independent Board Member for Fulton Financial Corporation. Denise had the attendees inspired and empowered to attend the morning's breakout sessions.

This year included the presenting of the first Woman of Excellence Award to Dr. Kathleen Owens, President Gwynedd Mercy University. This honor is given to a leading woman in Southeastern PA who has made an influential impact in the region. Following the award ceremony, attendees learned what it takes to be a Connector, not a Collector. Lunch keynote speaker, Nancy Dunleavy interacting with the group reached out to participants willing to share a need and made connections from the floor during her presentation.

In establishing the foundation for the future, area high school senior girls were invited to submit an application to be considered as a guest of the Conference and spend the day with a business mentor. Eleven young woman were selected representing Gwynedd Mercy High School, Lansdale Catholic High School, North Penn High School and Souderton High School.

Prospector

Published monthly by the
**PennSuburban Chamber of Greater
Montgomery County**

217 Church Road, Suite C, North Wales, PA 19454
Phone: (215) 362-9200 | Fax: (267) 613-8865

Chair of the Board

Daniel J. Reavy, McMahon Associates, Inc.

President/CEO

Pamela A. Kelly

Vice Chair

Michael Coakley, Kreischer Miller

Secretary

Nanette Carney, The Carney Group

Treasurer

David Magagna, Alcom, Inc.

Immediate Past Chair

Gary E. Brown, Univest Bank and Trust Co.

Board Chair Emeritus

Lon Seitz, Seitz Leatherman & Kolb, LLC

Board Member Emeritus

Robert G. Rosen, Esq.

Members of the Board

Nancy Bednarik

Merck & Co., Inc.

Gary Candia, Ph.D.

Abington Jefferson Health

John Ernst

Borough of Lansdale

Gaetan Giannini

Montgomery County Community College

Gregory Gifford

Rubin, Glickman, Steinberg & Gifford, P.C.

Jim Madanci

ShopRite—Hatfield

Paul Nye

Peaceful Living

Duncan Reed

Edward Jones Investments

Kevin Robins

Midatlantic Employers' Association

Sheri Strouse

Harleysville Savings Bank

A MESSAGE FROM THE PRESIDENT'S DESK



Whether your interest is in networking, learning or giving, there are a number of opportunities for you to get involved in the coming months. Spend an hour reading to children or help to keep our service area clean through the Adopt-a-Highway program on Rt 113 in Harleysville. Hear from area leaders about what keeps them up at night and learn what is happening in your community from 16 area municipal managers. Finally the Annual Business Expo, the largest in the area will allow for numerous new connections.

As always, if you haven't been to an event in a while, how about putting us on your calendar, we would love to see you.

Best,
Pam

Chamber Staff

Kim Nguyen, Vice President, Member Services

Sara Baumgardner, Communications & Events Coordinator

Danielle Bridge, Membership Development Manager

Wendy Custer, Member Relations Manager

Thank you to our major sponsors



DeSALES UNIVERSITY



MERCK SHARP & DOHME
FEDERAL CREDIT UNION

**MYBENEFIT
ADVISOR**



**Abington
Jefferson Health.**



ST. MARY CENTER & VILLA
A Continuing Care Retirement Community
701 LANSDALE AVENUE, LANSDALE, PA 19446



Covenant Bank
Banking at its best.

Fulton Bank
LISTENING IS JUST THE BEGINNING.™



Gwynedd Mercy
University



America's Most Convenient Bank®



MONTGOMERY COUNTY WOMEN'S CONFERENCE



The 2nd Annual *Power Your Potential: Montgomery County Women's Conference* was held on March 23 at Normandy Farm Hotel & Conference Center. A sold out crowd of over 200 attendees heard from keynote speakers, participated in breakout sessions, and helped to celebrate *Woman of Excellence* award winner, Dr. Kathleen Owens, President, Gwynedd Mercy University. The presenting sponsor of this conference was Merck & Co., Inc.

Chamber Board member Nanette Carney, **The Carney Group**, presented Dr. Kathleen Owens, President, Gwynedd **Mercy University**, with the *Woman of Excellence Award*.



Showing our appreciation to Honorary Chair Dr. Valerie Arkoosh, Montgomery County Board of Commissioners Chair.

Fulton Financial Corporation executives joined Keynote Speaker and member of the Fulton Board of Directors, Denise Devine, along with conference committee member, Mary Griffith-Alfarano, Fulton Bank.



Guests and volunteers from Presenting Sponsor Merck, & Co., Inc.



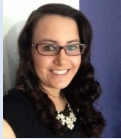
2017 Conference Committee Members



Through an application process, students from area schools were selected to join in the Young Women's Mentor Program. Jim Brusilovski, **Marks Jewelers**, presented each student with a generous gift to be used in future interviews.

MEMBER NEWS

[Baum, Smith & Clemens, LLP](#) successfully completed its thirteenth independent peer review with standards established by the Peer Review Board of the American Institute of Certified Public Accountants.



[Community Chiropractic Center](#) of Blue Bell welcomed Kristen Moser as the new Practice Representative.



[Dunlap & Associates, P.C.](#) announced two recent hires in the Accounting Services department; Lindsey Stephenson, Senior Accountant and Adam Malek, Staff Accountant.



[Dunleavy & Associates](#) Founder & CEO, Nancy Dunleavy, was honored by the *Philadelphia Business Journal* for her service as Chair of the Gwynedd Mercy University Board of Trustees.

[Hamburg, Rubin, Mullin, Maxwell & Lupin, PC](#) attorney, Kevin McGrath, was elected to the Board of Directors of the Literacy Council of Norristown.



[Lakeside School](#) has joined exhibitors from all around the world for the 2017 Philadelphia Flower Show.

[Merck Sharp & Dohme Federal Credit Union](#) presented Hoffman Memorial Awards to five high school seniors who portray the “people helping people” philosophy of credit unions.



[Miller Financial Group](#) Managing Partner, Gary Miller, presented his book “Taming Chaos—A Parable on Decision Making” to 6th graders at Sandy Run Middle School during World Read Aloud Day.



[Montgomery County Community College](#) held its second year of presentations by entrepreneurs for funding from the Karen A. Stout Start-Up Accelerator Fund.

[North Montco Technical Career Center](#) automotive students competed in the 24th annual Automotive Technology competition, earning the first place award, tuition to a choice of technical institutes, and the opportunity for further competition.



[Peaceful Living](#) announced that Leland Sapp, current Vice President of Operations, has been selected to be succeed Joe Landis, Founder and retiring CEO.



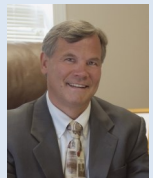
[QNB Bank](#) promoted Tiffany Pompei to the position of Vice President, Compliance Analyst.



[RE/MAX](#) agent Charles Catagnus qualified for the prestigious RE/MAX Hall of Fame Award.

[Right at Home](#) has been selected as a "Caring Star of 2017" for in-home care service excellence.

[Rubin, Glickman, Steinberg & Gifford, P.C.](#) Partner, Gregory R. Gifford, Esquire, was elected Vice President of the Montgomery Bar Association.



[TITAN Mobile Shredding, LLC](#) has received the highest level of certification in the secure document destruction industry.

[USI](#) reached an agreement whereby KKR and CDPQ will replace Onex Corporation as its private equity partner.

[Wegmans](#) recently celebrated 20 years on the Fortune 100 Best Companies to Work For, being named #2 this year.



Put Your News on Our Home Page!

Member News Can Now Be Submitted Online:

- 1) pennsuburban.org/login
- 2) Click **News Releases** on left column

Chapter News



**Wednesday
April 19**

Ambler Area YMCA
1325 McKean Road
Spring House

Join us
for light
bites at
5:30 pm.
Speed
Networking
will begin at
6 pm.

**Kickstart your
business this spring!**

Network with local business owners and reps at this fun and fast-paced event. The clock will be ticking, so be sure to bring your best pitch. Speed Networking is a fantastic way to make new and interesting connections.

The event is free to all who RSVP.
So, mark your calendar to join us!

RSVP by e-mailing Connie Brick
CBrick@DanSierchio.com

Skippack Village

GNO
GIRLS NIGHT OUT

MARCH 24TH
JUNE 16TH
SEPTEMBER 22ND
NOVEMBER 17TH



Shop, Sip, and Dine

Friday 6 - 9 pm
www.bestofskippack.com

Chamber Committees

Monthly Meeting Schedule

8:00 a.m. at Chamber Office Unless Otherwise Noted

Ambassadors	4th Wednesday
Golf	Inquire for Dates
Health	2nd Wednesday*
Human Resources	3rd Wednesday
Lansdale Businesses	4th Thursday**
LGBTQ	Inquire for Dates
Nonprofit	Now Forming
Small Business	4th Tuesday
Women's Network	1st Tuesday
Young Professional	Now Forming

*Meets at ShopRite Hatfield

** Lansdale Businesses Only



READY. SET. GROW.

No matter how your small business defines growth, chances are, we have a solution to make it happen.

Fulton Bank offers you the resources to help your business grow – whether you need to expand, renovate, or acquire. Plus, we are a Preferred Lender for the Small Business Administration (SBA). The Fulton Bank advantage means you get the products and services of a large bank along with the dedicated, one-to-one personal service of a community bank.

It's a great time to get growing.

Visit a branch to meet your
local relationship manager today.

Fulton Bank

1.800.FULTON.4 | fultonbank.com



Fulton Bank, N.A. Member FDIC. Loans are subject to credit approval.
Fulton Bank is not affiliated with the U.S. Small Business Administration.

RIBBON CUTTINGS & OPEN HOUSES



Patty Ferry, **Whole Body Yoga Studio**, was joined by staff, friends and patrons for the grand opening of the new location in North Wales.

Suburban Family Medicine celebrated its Grand Opening of their new location within Suburban Community Hospital. Cutting the ribbon along with residents and faculty is Dr. Peter Bidey, Assistant Professor Philadelphia College of Osteopathic Medicine and Director Family Medicine Residency Program - Suburban Hospital.



Jessica Marbot and colleagues from **Global Employment Solutions** opened its newest location in North Wales.



Congratulations to Jen Burnley and staff on the grand opening of **Scent & Sip** in Lansdale.

Bob Smith, Meghan Trout and mascot Ted of **Village Velo Bikes** celebrate their Grand Re-opening.



The Greene Turtle opened its first Pennsylvania location in North Wales. On hand to welcome the business to the area and the Chamber

were Board members Sheri Strouse, Harleysville Savings Bank; Duncan Reed, Edward Jones Investments; John Ernst, Lansdale Borough; Bob Rosen, Esq., and Ambassadors Mike Grover, Merck Sharp & Dohme FCU; Tom Rolan, Printworks & Co., Inc.; and April Donahue, QNB Bank.



MERCK SHARP & DOHME
FEDERAL CREDIT UNION

**New and
Pre-Owned
Vehicle
Financing**

2.24% APR* Up to 60 months

2.74% APR* Up to 72 months

2.99% APR* Up to 84 months

100% FINANCING
APPLIES TO REFINANCING, TOO!
APPLY NOW FOR A FAST DECISION!

- **Pre-approved Express Check**
- **eSignature Documents**
- **Online Application**

For membership inquiries contact:

Michael Grover
215-996-3744
mgrover@msdfcu.org



*Estimated monthly car loan payment per \$1,000 borrowed at 2.24% APR is \$17.63 for 60 months. Estimated monthly car loan payment per \$1,000 borrowed at 2.74% APR is \$15.08 for 72 months. Estimated monthly car loan payment per \$1,000 borrowed at 2.99% APR is \$13.21 for 84 months. Rates subject to change without notice. Subject to credit review. My Advantage discount does not apply.

WELCOME NEW MEMBERS

Alchemy Massage and Bodyworks

Lisa Franklin
alchemy8002.com

Amerikick North Penn

John Connor
amerikicklansdale.com

AnB Education

Tammy Sergeyev
anbeducation.com

Aqua-Tots

Andrea Sahl
aqua-tots.com

Better Living Home Health Care Services, LLC

Akubure Uzoiye
betterlivinghh.com

CycleBar

Stephanie McCaulley
northwales.cyclebar.com

Delightful Dinners by Dawn

Dawn McDonald
delightfuldinnersbydawn.com/index.php

Edward Jones - Hayes

Joseph Hayes
edwardjones.com/joseph-hayes

Farmers Insurance- Edward Diamond Agency*

Edward Diamond
agents.farmers.com/pa/blue-bell/edward-diamond

Fortunoff Backyard Store*

Ryan Luu
fortunoffbys.com

Greenfield Senior Living of Lansdale*

Alexis Martini
greenfieldseniorliving.com

GZA GeoEnvironmental, Inc.

Dan Amate
gza.com

Indian Valley Trading Company

Daniel Ireland
indianvalleytradingco.com

McHenry Creative Services, Inc

Thomas McHenry
McHenryCreative.com

North Wales Family Pharmacy

Nazar Ughryn
northwalespharmacy.com

Rothman Institute

Tim Jones
rothmaninstitute.com

SERVPRO of Warminster | Lansdale | Blue Bell

Rick Lutz
servprolansdale.com

South Jersey Energy

Seamus Brady
southjerseyenergy.com

Stanley Steemer

David Broderick
stanleysteemer.com

TH Consulting

Timothy Hallberg
thconsultingservices.com

The Giving Tree

Bridget Leary
givingtreefamilies.org

The Muscle Therapy Center

Marytheresa Vogler
themuscletherapycenter.com

The Turning Point

Donna Kleiner
theturningpoint.biz

TruMark Financial Credit Union-Gateway

Donna White
trumarkonline.org

TruMark Financial Credit Union-Plymouth Meeting

Brian Miller
trumarkonline.org

TruMark Financial Credit Union-Trooper

Denise Garrett
trumarkonline.org

Village Velo

Meghan Trout
villagevelobikes.com

Windsor Financial Group/MassMutual*

Kenneth Ng
windsorfinancialgroupinc.com

WELCOME BACK

DJB Specialties Inc/GForce Promotions

David Blank
djbspecialties.com

Lifeline Family Chiropractic Center*

Jonathan Wassermann
MyChiropractor4Life.com

**Indicates Centennial Member*

CHAMBER MILESTONES



Thank you to **Hamburg, Rubin, Mullin, Maxwell & Lupin PC** for supporting the Chamber for 25 years. Firm representatives pictured include, partner Mark Himsworth, Joan Wean, Legal Administrator and Managing Partner, Steve Lupin.



Board Vice Chair, Mike Coakley **Kreischer Miller** presents a token of the Chamber's appreciation to Jack Russo, VP Finance & Operations and the staff of **Metal Edge International** for 25 years of support.



Thank you to **Foulkeways At Gwynedd** for 20 years in support of the Chamber. Pictured with Pam Kelly is Mike Peasley, CEO and Vic Vaughn, President of Foulkeways Residents Association.



Doug DePasquale, and staff of **Minuteman Press-Lansdale** celebrate 10 years as a Member.



Thanking Rob Ford and staff at **Towamencin Township** for 10 years in the Chamber.



Thank you to Jerry Lawson, owner, **Right at Home**, along with Tina and Victoria for 5 years of support.



Sharing our appreciation with **QNB Bank**, April Donahue and Bruce Kenworthy, for 5 years of supporting the Chamber.

Looking for referrals? The search stops here!

Business Partnership Network

Exclusive Member Benefit

An effective and less expensive alternative to the national referral groups with weekly meetings and one representative per business category.



Contact Danielle: 215-362-9200 or danielle@pennsuburban.org

MEMBERSHIP RENEWALS—THANK YOU FOR YOUR SUPPORT

35 years

Robert G. Rosen, Esq.*

25 years

**Prescott
INSURANCE**



15 years

Strategic Job Search

5 years

**KEIGHTLY
LAW OFFICES**

NORTH PENN *Art*

the Walters GROUP
Assess. Act. Accelerate.

Ackerman Security Systems
Allebach Advertising
Allstate-Dougherty-Schmitt Agency*
American Heritage Federal Credit Union
Angel Flight East
Blue Bell Country Club
Citadel
Community Chiropractic Center
Crowne Tutoring & Test Prep
Damian H. Ward, Ltd.
Einstein Medical Center Montgomery*
Executive House Apartments*
EZ Storage*
For Pete's Sake Cancer Respite Foundation*
Genisys Credit Union*
Gerald W. Snyder & Associates, Inc.
Gwynedd Mercy University
Keller Williams Real Estate-Moyer
Living Branches*
ManorCare Health Services
Meadowood Senior Living
Milestones In Music*
Montgomery Mall
Montgomery Theater, Inc.
Montgomery United Soccer Club
Neptune Chemical Pump Co*
North Penn Federal Credit Union
North Penn Valley Boys & Girls Club*
Peruzzi Toyota Scion
RE/MAX Reliance

Rebounderz of Lansdale*
RedKnight
Re-Pack Inc.*
Residence Inn by Marriott*
Rotary Club of North Penn
Sanford Alderfer Real Estate*
Signarama
Sunbelt Network
The Culinary Arts Institute of MCCC*
The Intelligencer*
The Law Offices of Amy S. Newman, PC
Tri-J Solutions, Inc.
TruMark Financial Credit Union, North Wales*
Wesco Industrial Products
Whitemarsh Memorial Park
World Wide Stereo

**Indicates Centennial Member*



For over 50 years, we have been providing color
and additive masterbatches to nearly every
industry that uses color.

PENNCOLOR.COM

RECENT EVENTS

The Chamber partnered with several area networking and membership organizations to provide members and guests with a unique experience at **Talamore Country Club**; a *Business Networking Bonanza*.

Morning Chat at **BJ's Wholesale Club** in Montgomeryville.



The Chamber's new initiative, *Hit Your Mark*, is a specialized networking event designed to bring members together based on their field of expertise.

February's *Hit Your Mark* at **Ambiance Design** focused on members in the home improvement field.

We had the opportunity to promote the Chamber at the Philadelphia Small Business Expo.



Pictured here are Mike Thompson, **Envoy Mortgage**, Dave Broderick, **Stanley Steemer**, Beth Allen, **HIP Chicks LLC**, and Beverly Williams, **Keller Williams Real Estate**.



The *Young Professional Network* is back and started with an evening of networking at **Round Guys Brewing Co.**



Chamber Ambassadors and staff welcomed new members at the *Meet New Members* luncheon sponsored by **Elm Terrace Gardens**.

Education Opportunities

The Chamber is committed to providing educational programs to support professional and personal development. We have developed relationships with our business and industry leaders as well as our educators to design programs to serve our community.

BUSINESS WRITING **SEMINAR**

Wednesday, May 10
3:30—5:00 p.m.

Chamber Office, North Wales

- Develop effective writing skills and project a powerful, professional message.
- Learn how to write with clarity, cogency and style.
- Obtain basic writing mechanics, including punctuation, tone and diction.
- Learn tips and techniques to deliver compelling message.

LEADERSHIP & YOUR **INNER MONOLOGUE**

Thursday, May 11
11:30 a.m.—1:00 p.m.

William Penn Inn, Gwynedd

- Master your self-talk to become a productive, inspiring leader.
- Presentation by Mary Fran Bontempo, author, speaker and humorist.
- Mary Fran has been writing for and about women for over 30 years.
- *Lunch Included*

TOP 5 CHALLENGES FACING **BUSINESS LEADERS TODAY**

Thursday, May 18
7:30—9:30 a.m.

William Penn Inn, Gwynedd

- Hear from a panel of experts.
- Gain tips on acquiring and managing skilled talent.
- Learn how to navigate competition and new business models.
- Discover how to adapt to changing technology and cyber security threats.
- *Breakfast Included*



Community Health & Youth Foundation

The Community Health & Youth Foundation collaborates with the local business community to foster programs and activities targeting **EDUCATION** and **WELLNESS** which enhance the quality of life in our community.



Programs supported by the Foundation include the **19TH ANNUAL COMMUNITY READING DAY** on May 2nd and **HEALTH EDUCATION EVENTS** targeting topics that effect

large numbers of individuals that would benefit from additional conversation. The most recent program, *Six Degrees of Depression and Anxiety: Could You Be Connected or Affected*,

was held on April 6th at Abington Jefferson Health—Lansdale Hospital.



The Foundation is also proud to support the **PENNSYLVANIA FREE ENTERPRISE WEEK** (PFEW) program and provide scholarships for area high school students. Every student attends PFEW on a fully tax-deductible \$575 scholarship provided in full or in part by local companies. The Foundation has made the commitment to support at least 5 scholarships for students in our area.

Visit pennsuburban.org to learn more about the Foundation or to make a tax-deductible donation.

