



Mission Chamber of Commerce **Business**TRACK

connect • influence • prosper

JUNE 2016

MRCC Remediation standard policy receives unanimous support at BC Chamber AGM

Business leaders from across B.C. met recently to set an aggressive new policy agenda for the BC Chamber of Commerce's advocacy efforts to the province. 49 policies were passed at the BC Chamber Annual General Meeting & Conference, the province's foremost business gathering, held this year in Kelowna May 29-31.

This unique grassroots policy-building forum brought together Chambers from all corners of the province vigorously debate and adopt new policies affecting business operations throughout the province.

Representatives from Mission Regional Chamber of Commerce (MRCC) included Kristin Parsons, MRCC Executive Director and David Sawatzky, MRCC President and Tony Luck, MRCC Director and Govt. Affairs Committee Chair.

The Mission Regional Chamber of Commerce policy resolution on **"Remediation Standard for Legal and Illegal substance affected properties"** was adopted during this year's event. The resolution put forward by the Mission Chamber with support from Quesnel Chamber of Commerce, addresses

pressing issues identified by the Business community on the need to ensure a standard level of remediation of homes affected by the manufacture and cultivation of substances.

Currently, the lack of a universal remediation standard, means that these properties frequently aren't eligible for a conventional mortgage. That in turn means that these homes are sometimes left abandoned,

brought back into the market, they may get sold privately after the seller has done marginal repairs.

"That's when you can see safety issues emerge," said Sawatzky. "So there are a number of reasons our Chamber brought this policy forward to seek a province-wide solution."

The Government Affairs Committee within the Mission Chamber has been working

receive overwhelming support on an issue that we identified as vital to our Members, and were proud to have the support of the MRCC Board of Directors to now further our efforts by presenting this policy to the Canadian Chamber of Commerce in September." Adds Tony Luck, Government Affairs Committee Chair. "This is an exciting time to be a Mission Chamber member!"

buy in by the delegates at the AGM." Adds Sawatzky.

Mission Chamber supported several other chambers resolutions from the region, including Abbotsford Chamber and Langley Regional Chamber of Commerce.

Locally supported resolutions included:

- Supporting BC land based wineries, cideries and distillers
- Enhancing Agriculture competitiveness through equitable taxation
- The need for urban approach to transportation increasingly urban province
- Credit card merchant fees

Resolutions adopted by the AGM process become a part of the BC Chamber's advocacy agenda to the Provincial Government. A preliminary version of this policy is available on the BC Chamber website; please note that this isn't identical to the version passed, due to minor amendments made on the policy floor. An updated copy of all the resolutions passed this year will be made available on the Mission Chamber website in early July.

"We were very pleased to receive overwhelming support on an issue that we identified as vital to our Members . . ."

TONY LUCK, GOVERNMENT AFFAIRS COMMITTEE CHAIR

as buyers can't be found.

"This is a problem that's showing up right across B.C.," said David Sawatzky, President of the Mission Regional Chamber. "Because banks generally won't provide mortgages, these homes are near impossible to sell, and that's limiting our housing stock in a time when so many communities need more affordable housing."

A secondary problem is that when these homes can't be legitimately remediated and

on this policy for many years, with the assistance of local chamber members, BC Real Estate Board and BC Home Builders Association. "We have been working hard to ensure the policy developed was ready for provincial attention. The due diligence of the committee members in the background research and engagement with key stakeholders was paramount in ensuring the success of the policy," continues Sawatzky.

"We were very pleased to

This year the BC Chamber brought together over 169 delegates (representing 454 votes) of chambers of commerce and boards of trade from across the province to discuss and debate 55 proposed resolutions on issues that are most important to their respective memberships. Mission Chambers resolution received unanimous support from the delegates. "We left no doubt that this was an important and long awaited policy that needed attention now which helped to get the

Designed for Real Life

SWING OPTICAL
Serving Mission for over 25 years

3RD PARTY BILLING *EYEGLASSES ONLY
Blue Cross • Sunlife • Manulife • Standardlife & more

Dr. Lyndon Balisky,
Optometrist

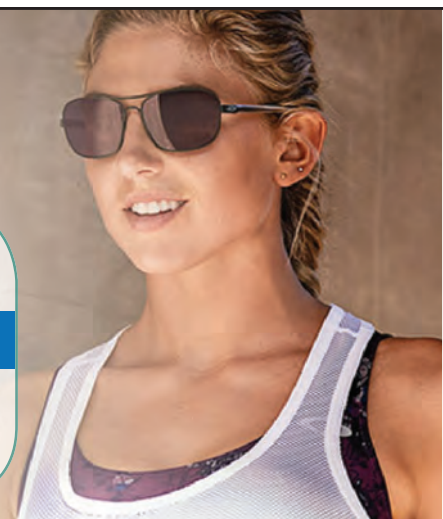
- Laser consultation
- Contact lens fitting

Book Your Eye Health
Examination Today
604-820-1112

30% OFF

Selected Oakley Sunglasses

OAKLEY



2 - 33231 First Avenue, Downtown Mission • 604-820-1112

swingoptical.com

www.missionchamber.bc.ca

Tony Luck
VICE PRESIDENTSean Melia
TREASURERAnn Harper
PAST PRESIDENTBrian Rock
DIRECTORAndrea Walker
DIRECTORAlana Martens
DIRECTORAllan Main
LIAISON,
C.F.N.F.Ilona Klimczak
DIRECTORRandy Hawes
DOM LIAISONCarlo Billinger
MDBA LIAISONJason Hughes
DIRECTORAsvind Mani
DIRECTORJJ Whitley
DIRECTOR

JUNE 2016

President's Report

As I write this month's column I reflect on the BC Chamber of Commerce Annual General Meeting I just returned from last Wednesday. This was not my first Provincial Chamber AGM & Conference however it still astonished me how much education, business and networking can be packed into three days. We were privileged to hear presentations from Government Ministers and very knowledgeable speakers on a variety of topics, one of which stood out to me; "The Economy of the Future" by a brilliant presenter, Jesse Hirsh.

Some other notable topics included Engaging the Millennial Generation, Responsible Resource Management and Strategic Planning. The networking aspects of these conferences are always a highlight and provide incredible teamwork between BC's Chambers of Commerce throughout the year. We spend time building relationships between our organizations around specific issues and strengths, and look for opportunities to build our member's networks and our advocacy efforts to new heights. For someone who is very policy and advocacy driven, it is hard

to beat the policy sessions at the BC Chamber AGM. Chambers around the province spend countless hours throughout the year advocating on behalf of their members and submit policy resolutions to be discussed, debated and ultimately passed or rejected by the delegates assembled, through a very rigid parliamentary process.

This year I am very pleased to report that the Mission Regional Chamber of Commerce was successful in our policy resolution efforts. Our policy titled "Remediation Standard for Legal and Illegal Substance Affected Properties" was passed unanimously and will form part of the BC Chamber's policy manual presented to the BC government. We will now be refocusing this policy to a national scale and present it for consideration to the Canadian Chamber of Commerce in Regina, Saskatchewan in September. These are exciting times to be a chamber member in Mission!

Now that I near the end of this month's message, I would be remised if I did not mention a few local highlights coming up for us in the near future... Our deadline for booking our October



David Sawatzky PRESIDENT

trip to China is on July 15th. We have our picnic in the park and Chili Cook Off event on June 16 at Heritage Park. This is your chance to concoct your best chili - a very nice trophy and "serious" bragging rights are on the line. On June 21 we are welcomed to Sandpiper Golf Course at Pretty Estates for a Business after Hours reception with the option to stay and golf for only \$10. Lastly, please don't forget that the deadline for Business Excellence Award submission is July 31st. Show your support for local business by recognizing the best of the best!



**FRASER RIVER HERITAGE PARK
JUNE 16 • 11:30 AM - 1:00 PM**

SHOWDOWN BEGINS AT 11:30 AM
Book your spot today online missionchamber.bc.ca
or by calling Allison at 604-826-6914

Picnic in The Park: CHILI COOK OFF

Got a great chili recipe?

Make it and bring it to the Picnic in the Park for your chance to win a prize and be crowned Mission's Chili Champion.

Don't like to cook?

But know a great chili when you taste it? Come be the judge at the Chili Cook Off

May the best chili win!



Begin your Mission Real Estate experience!

**Brian
Rock**

Contact me today and take advantage of my unique local knowledge - in todays market you need a professional on your side!

Rock Solid Results

**LANDMARK
REALTY**
A Move Ahead

604-855-2472 103-32471 Lougheed Hwy, Mission www.brianrock.ca

UPCOMING EVENT

JUNE 16

CHAMBER MONTHLY LUNCHEON

Speaker: Picnic In The Park: Chili Cook Off

Place: Fraser River Heritage Park

Time: 11:30am-1:00 pm

Price: \$10 members / \$15 non members

GOT A GREAT CHILI RECIPE?

Make it and bring it to the Picnic in the Park for your chance to win a prize and be crowned Mission's Chili Champion.

DON'T LIKE TO COOK

But know a great chili when you taste it?

Come be the judge at the Chili Cook Off

SHOWDOWN BEGINS AT 11:30 AM

JUNE 21

BUSINESS AFTER HOURS – PRETTY ESTATES RESORT: SANDPIPER GOLF RESORT

The Business after Business mixer is the best way to make connections within the Mission Business community. Bring your business cards and be ready to network with your fellow members!

Place: 14282 Morris Valley Rd, Harrison Mills

Time: 5:00pm-7:00pm Cost: FREE to members

AUGUST 10

BUSINESS AFTER HOURS – STORAGE FOR YOUR LIFE

The Business after Business mixer is the best way to make connections within the Mission Business community. Bring your business cards and be ready to network with your fellow members!

Place: 33433 N Railway Ave

Time: 5:00pm-7:00pm Cost: FREE to members

**SEPTEMBER 23
NIGHT GOLF**

Join the Mission Chamber of Commerce for our first annual night golf event on September 23 and have a blast. The Night golf event features

9 holes of super cool night golf, prizes, food, refreshments and music, capped off by the infamous Glass Break Party.

Place: Ledgeview Golf Course

Time: 6:00pm-11:00pm Cost: \$85 per player



**NOT SURE HOW TO MAKE A
CONNECTION...
JOIN THE CHAMBER**



Spotlight on Business:

Mission's new heavy-equipment operator school: Weekly course intakes and real-world, hands-on student experience make the difference

Kathleen Rake, Click Media Works

"We serve two groups really," said Mike Hansen, president of Interior Heavy Equipment Operator School (IHE), "people who want to learn to operate heavy equipment—properly and safely—and the companies that want to hire well-trained operators."

Since 2005, IHE has been taking the pulse of industries that use heavy equipment and designing its courses to meet their needs. In addition, IHE considers the needs of its students, who will eventually satisfy employers' requirements as heavy-equipment operators.

Students at the IHE Operator Schools get real-world experience operating full-size equipment in a real-life working environment.

"We make sure each student has his or

her own piece of equipment. There is no sharing," explained Christine Bay, IHE business development manager. "We want them to get immersed and learn every aspect that will both keep them safe and make them effective when they are employed as heavy-equipment operators."

Each student puts in a full day, with five hours of hands-on training (including pre- and post-operating checks) on full-size, industry-compliant equipment—dozers, articulated rock trucks, graders, wheel loaders, rubber-tire backhoes—depending on the particular course. Two more hours each day are spent in the classroom learning the theory behind topics like surveying, slopes, soil, and maintenance. Resume-building classes are included as well.

IHE has three locations to serve its students and industry partners: Winfield, B.C., Innisfail, Alberta, and

here in Mission, which makes it easy for its students to access the work along the coast, and managers on the coast to meet prospective new-hires.

The Mission campus of IHE is set to host an open house on Saturday, June 18, where visitors can see the live-training site, meet graduates and industry partners, and those who are interested can have a real-life experience sitting in an A.R.T. truck or operating an excavator.

Drop in at 11750 Dewdney Trunk Road, 11:00 AM – 4:00 PM; no registration is required for the open house.

For more information about the weekly course in-takes, call toll-free 1-866-399-3853 or visit www.IHESchool.com. And stay tuned for www.HEOJobShop.com, a website geared to connect trained operators and those who hire them.

Garden clean-up made *Easy!*

STIHL®
BG50
HANDHELD BLOWER
\$179⁹⁵ MRSP \$219.95



- Lightweight design perfect to clean-up clippings, debris and leaves
- Exceptional high air velocity

FORESTRY

Chain Saws • Bar & Chain • Chain Saw Mills • Axes
• Mauls • Safety Equipment • Accessories

LAWN & GARDEN

Riding Mowers & Tractors • Lawnmowers
• Blowers • Grass & Hedge Trimmers
• Tillers • Cultivators • Accessories

SAFETY & FOOTWEAR

"We Service What We Sell"



• Sales • Parts • Service • Work Clothing

33320 Glasgow Ave., Mission

604.826.8696

prospectequipment.com





Mission Chamber of Commerce Presents,

NIGHT GOLF

FRIDAY
SEPTEMBER 23RD

Registration 6 PM
Pre - Golf BBQ
6 - 7:30 PM

Shot Gun
Start 7:35 PM

\$85.00 /Person +GST
Includes the following:

Nine hole round of golf
Glow Gear & Glow Sticks
Food, Refreshments, Music

THE FAMOUS GLASS BREAK PARTY

and more!

Proudly Sponsored by



Ledgewien Golf & Country Club

35997 McKee Rd, Abbotsford, BC

Register Online at Missionchamber.bc.ca
Or Contact Allison
(604) 826-6914

WELCOME TO OUR NEW MEMBERS

Ruffdog Sport Supply

Mission, BC
778-552-0545

Jo-Anne McGurk

33741 Ferndale Avenue
Mission, BC
1-866-399-3853

Slap Communications

3511 Bassano Terrace
Abbotsford, British Columbia
604-410-1600

JD Highline Consulting Ltd

34625 Moffat Avenue
Mission, BC
604-848-5478

*Find out what Membership
can do for you!*

To become a member visit us online at
missionchamber.bc.ca or call 604-826-6914

2016 CHAMBER TEAM

"Membership has its benefits!"



execdir@missionchamber.bc.ca

Kristin Parsons
Executive Director



member_services@missionchamber.bc.ca

Allison Jack
Member Services



**Mission Regional
Chamber of Commerce**
missionchamber.bc.ca 604-826-6914
34033 Lougheed Hwy, Mission BC V2V 5X8



Growing communities one idea at a time.



Loans for business
start-ups or expansions
604-826-6252
info@northfraser.org
www.northfraser.org



This initiative is supported by Western Economic Diversification Canada



Vishal Kant Bajpai,
BSc, JD

- Personal injury
- Family law
- Business law

Suite 1
33775
Essendene
Avenue,
Abbotsford
604.746.2972
www.bajpai.ca



*"Promoting
Business and
Tourism
Development
in Mission"*

INFORMATION AVAILABLE

- Mission Community Profile
- Commercial and Industrial Property Inventory
- Business Opportunities

7337 WELTON STREET, MISSION, BC V2V 3X1
Tel: 604.820.3789 • Fax: 604.820.6738 • Toll Free: 1.866.814.1222
email: edc@mission.ca • www.mission.ca



DAVIES

Sand & Gravel Ltd.

604.826.6736

**All types of Sand,
Gravel & Topsoil**

- Excavators • Low-beds • Topsoil
- Loading • Trucking • Cats



11496 DEWDNEY TRUNK RD., MISSION, BC • MAIL - BOX 3663 • V2V 4L2



SAVE ON YOUR MERCHANT SERVICES

FIRST DATA

As a Chamber member we wanted to let you know how you can access excellent savings on merchant services through our partner, First Data, a leader in the electronic payment processing industry. Together we are ready to help you save more and sell more with preferred pricing and products tailored to suit your needs.

AS A CHAMBER MEMBER YOU BENEFIT FROM:
Preferred Chamber pricing base as follows:

- Visa 1.49%
- Mastercard 1.49%
- Discover 1.60%
- Card Brand 0.15%
- NQA 0.27%
- Interac Debit \$0.05/transaction
- Monthly Account Fee \$5.00 (additional processing fees may apply)

VERSAPAY

VersaPay offers industry leading payment processing, credit card terminals and merchant

accounts. VersaPay is able to offer gold standard support and solutions for members of the Mission Chamber of Commerce.

AS A CHAMBER MEMBER YOU BENEFIT FROM:
Preferred Chamber pricing base as follows:

- Visa 1.49%
- Mastercard 1.49%
- Interac Debit \$0.05/transaction

For more information or to see if this benefit is for you contact your Allison Jack at member_services@missionchamber.bc.ca

Symons Tire

Premium Tires and Top-Rated Service
Family Owned & Operated Since 1973



Michelin Premier A/S

Introducing a new technology labeled as EverGrip to maintain wet braking grip as a tire wears. This is a grand touring all-season tire developed for the drivers of coupes, sedans & minivans.



- BRAKE SERVICE • TUNE-UPS • LUBE & OIL • CLUTCHES • ALTERNATORS
- MUFFLERS & EXHAUST • TIRES: ROTATION & BALANCING • WHEEL ALIGNMENT • SHOCKS & STRUTS • DIAGNOSTICS



33245 GLASGOW AVENUE • 604.826.9119
(LOCATED NEXT TO COMMUTER RAIL)

www.symonstire.com



TAYLOR, TAIT, RULEY & CO. LAWYERS



**Gordon D. Taylor
Q.C.:**
• Wills & Estate Planning and Litigation
• Corporate & Business Law
• General Civil Litigation



**John G. Tait,
Q.C.:**
• Divorce & Family Law
• Wills & Estate Planning and Litigation



Gordon W. Ruley
• Real Estate Transactions
• Commercial Development
• Corporate & Business Law
• Wills & Estate Planning



Donna K. Maser
• Divorce and Family Law
• Child Protection
• Family Law Mediation
• Family Law Arbitration
• Aboriginal Law



Chris J. Stenerson
• Personal Injury/CBC claims
• Divorce & Family Law
• Estate Litigation
• General Civil Litigation



Troy A. Dickson
• Divorce & Family Law
• General Civil Litigation
• Wills & Estates



Jason A. Hughes
• Wills & Estate Planning
• General Civil Litigation
• Real Estate Transactions
• Estate Litigation
• Corporate & Business Law

33066 First Avenue, Mission
p: 604-826-1266 f: 604-826-4288 e: info@taylortait.com

A full service Law Firm serving the Fraser Valley since 1978

www.taylortait.com



Business WALK 2016

WHAT IS A BUSINESS WALK?

It's an informal way for the Board and Staff of the Mission Regional Chamber of Commerce along with other local leaders to get in touch with the pulse of our membership and help to build relationships with our members. Business walks help to gather business intelligence needed to help us serve our members needs and help provide support to stimulate the local economy. During a short period (usually around 3-4 hours), leaders walk from business to business, talking to business owners about their successes, struggles, barriers and possible solutions. This gives Mission Chamber leaders the ability to better understand the needs of the businesses and bring forward programs, services and advocacy efforts that align with the local businesses. Those businesses experiencing troubles can be red-flagged for follow-up from Chamber staff and the District if necessary to see where we can all work together to help bring solutions.

The Mission Regional Chamber of Commerce is planning a week long Business Walk with members of the Board and other local leaders in late June/Early July. If your business would like to be included in the list of visits, please contact the chamber by emailing execdir@missionchamber.bc.ca.

Help the Mission Chamber better understand your needs and bring value to your Chamber membership!

CHINA

LIKE NEVER BEFORE

October 7-17, 2016

Tick CHINA off your bucket list with a once in a lifetime Adventure.
Space is limited.

ONLY \$2299.00*

BEIJING, SHANGHAI, SUZHOU, HANGZHOU

Amazing world heritage sites include: Tian An Men Square, Temple of Heaven, The Forbidden City, Summer Palace, Ming Tombs, Lingyin Temple and of course the Great Wall of China

You will also visit The National Silk Embroidery Institute, Kunming Lake, Linger Gardens, Tiger Hill, the Hangzhou and Pudong Economic Zones, enjoy a boat cruise on West Lake visiting pagodas and tea houses, Yu Garden, The Bund and more!

ADD \$200 TO TAKE THE TERRA-COTTA WARRIORS ITINERARY

Your Trip Includes:

- Roundtrip international airfare & Chinese domestic airfare & Tax
- 4-and 5-star hotel accommodations • 3 meals/day • Deluxe bus tours
- English-speaking tour guides • Entrance fees for attractions



*Chamber Member price * add \$200 non-members *based on double occupancy

For more information call Maple Ridge Pitt Meadows Chamber of Commerce at 604-457-4599 or Mission Chamber of Commerce at 604-826-6914.



Black Press



*Sign up Today
for Classes!*



Be inspired and get creative!

Learn how to create living displays, fairy gardens and terrariums, floral techniques and interior design ideas. Transform your old furniture with chalk painting.



**SPECIAL
OFFER**

\$20 OFF
any art display class
with this ad

*No cash value.
One per person booking.
Expires June 30th, 2016

**Magnolias
on
Main**

33253 First Avenue
Mission
604-826-1110

www.magnoliasonmainflowers.com